

APPENDIX C

CONTAMINATION AND HAZARDOUS BUILDING MATERIALS ADVICE - JBS&G (NSW & WA) PTY LTD

JBS&G 43413-57366

04 April 2014

Dominic Hunt
Mirvac Projects Pty Ltd
Level 26, 60 Margaret Street
Sydney, NSW 2000
Via email: dominic.hunt@mirvac.com

Project Roosevelt – Contamination and Hazardous Building Materials Advice

Dear Dominic,

1. Introduction

JBS&G (NSW & WA) Pty Ltd (JBS&G) was requested by Mirvac Projects Pty Ltd (NSW) (Mircvac), the client, and Coombes Property Group Pty Ltd, to undertake a review of the contamination and hazardous buildings material status of the property located at 505 George Street, Sydney, NSW 2000 (the site). The site has an area of approximately 4308 m² and is legally described as Lot 1 on Deposited Plan 573250. The site location is shown in **Attachment 2, Figure 1** and the site layout is shown in **Attachment 2, Figure 2**.

2. Objective

The objective of this investigation is to provide an opinion on the suitability of the site for the proposed mixed-use from a contamination perspective, for inclusion in a planning proposal to the City of Sydney for a mixed-use development including residential and commercial (retail) uses.

3. Scope of Works

The scope of works for as part of this engagement were:

- review and assessment of the four supplied previous contamination and hazardous building material reports detailed in **Section 6**;
- review of current NSW EPA notices and listings on or adjacent to the site;
- conduct a site walk-by; and
- prepare a letter report, presenting the findings of the engagement.

4. Summary Site Details

The site details are summarised in **Table 4.1** below:

Table 4.1 Summary Site Details

Lot/DP	Lot 1 on DP 573250
Address	505 George Street, Sydney, NSW 2000
Local Government Authority	City of Sydney
Site Zoning	B8 Metropolitan Centre
Current Use	Commercial
Proposed Use	Multi-unit residential and commercial (retail)
Site Area	Approximately 4308 m ²
MGA Coordinates (Zone 56) of the approximate centre of site	E:334075 N:6250242

A site walk-by was conducted by one of JBS&G's trained and experienced field scientists on the 3rd April 2014. The site was confirmed to appear as described in previous environmental assessments and comprised of a 6 level cinema complex and commercial shops including food outlets, learning centre and food outlets. This building occupies the entire site with no accessible soils. A basement consisting of retail shops and a car park was identified by Hyder (2009¹).

A battery room on level 1 with approximately 50 Enerlyte stationary batteries for back-up power generation was identified in Hyder (2009). No underground storage tanks for back-up diesel powered generators were identified in the basement during the previous investigation (Hyder 2009).

5. Review of Site History

A summary site history from aerial photograph reviews and Land Title searches provided in Hyder (2009) is presented below.

Hyder (2009) identified a single building in the 1930's on the site. Additional building were noted in the 1950's with additional extensions in 1970. Anecdotal evidence suggested that the site was a production theatre with costume design and possibly fabric manufacturing.

It is believed that former 'Sydney Trocadero' was the main building identified². This large dance and concert hall was operational between 1936 and 1971 on the site. Given this new information, it is considered unlikely that any large-scale fabric manufacturing occurred on the site.

In the mid 1970's the site was re-developed into a picture theatre (cinema). The entire site was covered by a single building. It is anticipated the basement was excavated during this substantial redevelopment of the site. As such, any potential contamination from the limited fabric manufacturing or previous site uses were likely excavated during the construction of the basement. All works since this appear to have been renovations placing additional levels on top of the current structure layout.

It is noted that no industries listed in Appendix A: Industries and Chemicals Used in DUAP (1998³) are evident in the site history.

6. Review of Previous Environmental and Hazardous Material Reports

Four documents were supplied by Mirvac for review as a part of this assessment.

¹ *George Street Cinema Complex - Phase 1 Environmental Assessment*. Hyder Consulting Pty Ltd, July 2009 (Hyder 2009).

² <http://www.dictionaryofsydney.org/entry/trocadero>. Accessed on 4th April 2014.

³ *Managing Land Contamination: Planning Guidelines, SEPP 55-Remediation of Land*. Depart of Urban Affairs and Planning, 1998 (DUAP 1998).

6.1 *George Street Cinema Complex - Phase 1 Environmental Assessment. Hyder Consulting Pty Ltd, July 2009 (Hyder 2009)*

Hyder Consulting Pty Ltd (Hyder) conducted a Phase 1 Environmental Site Assessment of the site in July 2009. This comprised a desktop investigation and a site investigation of accessible areas of the site with no intrusive soil, groundwater or emissions sampling.

The objective of this assessment was to investigate the potential for contaminated land as a result of current and historic site activities. Hyder (2009) conducted a desktop review of historical site aerials, land title searches, surrounding land-use, council records, NSW EPA (DECC) records and the environmental setting of the site.

Hyder (2009) concluded the following:

- it was unlikely that significant soil or groundwater contamination be present on site;
- historical land uses, such as possible fabric manufacturing, had the potential to contaminate soils and/or groundwater underlying the site;
- minor amount of chemicals used in day to day maintenance of the commercial building were not considered to pose a significant risk;
- asbestos containing materials (ACM) did not pose a health risk if left undisturbed. Hyder (2009) recommended that if disturbance was to occur, as during site re-development, the ACM should be removed prior to or as part of these works; and,
- a Phase 2 ESA was not required for the site. However, if the site was to be re-developed to a more sensitive land-use, then a Phase 2 ESA or investigations may be required. Additionally, if the site was to be re-developed with works requiring excess soil removal, soil quality testing of excess soils would be required prior to off-site disposal.

6.2 *Asbestos Material Survey Report – Greater Union Cinema Complex, George Street, Sydney. Environmental Risk Management Australia, July 2006 (ERMA 2006)*

Environmental Risk Management Australia (ERMA) conducted an asbestos materials survey report for the site in July 2006. This comprised a non-destructive site inspection limited to asbestos containing materials in accessible areas.

ACM was reported in 21 locations with 15 of those comprising “Paddie fire control” doors. All ACM was reported as either priority rating P3 (low risk requiring maintenance) or priority rating P4 (negligible risk under present conditions). ACM onsite was therefore considered to be in good condition with ongoing maintenance required.

6.3 *Asbestos Materials Survey – George Street Cinemas, 505-523 George Street, Sydney, NSW 2000. Hibbs and Associates Pty Ltd, August 2009 (Hibbs 2009)*

Hibbs and Associates Pty Ltd (Hibbs) conducted an asbestos materials survey for the northern building of the site in August 2009. This comprised a review of the ERMA (2006) and a site investigation of the northern most building of the cinema complex.

Five different ACM products were reported across 31 locations in the northern building. All ACM was reported as either priority rating P3 (low risk requiring maintenance) or priority rating P4 (negligible risk under present conditions). Synthetic mineral fibres were reported in at least five locations in the northern building.

Hibbs (2009) recommended that the asbestos materials should be removed prior to demolition or refurbishment works that would potentially disturb the asbestos materials in accordance with the latest regulatory requirements for the removal of asbestos.

6.4 Airsafe Test Report, Project: 505 George Street, Sydney, Job Number: 14930, December 2009

This test report refers to a single sample of compressed fibrous cement sheeting from an external column behind tiles. The exact location of this sample cannot be determined by JBS&G. No asbestos was detected in the sample.

7. Assessment of Previous Environmental Reports

The previous environmental assessments are considered to be adequate for their proposed scopes at the current stage of the development and planning process. The site and adjacent properties appear to have remained as commercial facilities since the completion of the four environmental reports reviewed in **Section 6**. As such, it is considered that the findings of the four reports remain broadly valid in terms of assessing the potential contamination and hazardous materials condition of the site. However, on the basis of the information presented in the contamination report (Hyder 2009), JBS&G is of the opinion that no further assessment of contamination is warranted, as no Areas of Environmental Concern (AECs) or Contaminants of Potential Concern (COPCs) are likely to remain following the redevelopment of the site, including the basement construction in the 1970's.

8. Review of NSW EPA Records

A search of the NSW EPA public register under the Protection of the Environment Operations Act 1997 was undertaken on the 3rd April 2014 (**Attachment 3**). The search identified that, for the site there were:

- no prevention, clean-up or prohibition notices; and
- no transfer, variation, suspension, surrender or revocation of an environment protection licence (EPL).

A search was undertaken of the NSW EPA public contaminated land register on the 3rd April 2014 (**Attachment 3**). The search identified that there were no notices issued for the site, or for nearby properties under the Contaminated Land Management Act 1997 (CLM Act).

In addition, a search of the NSW EPA "List of NSW Contaminated Sites Notified to EPA" on the 3rd April 2014 identified that the site or nearby properties have not been notified to NSW EPA under Section 60 of the Contaminated Land Management Act 1997 (CLM Act) (**Attachment 3**).

9. Conclusions

Based on the findings of this investigation and subsequent to the limitations in **Attachment 1**, the site is considered suitable for the proposed mixed use development with commercial (retail) use and residential use with minimal access to soil without any further assessment, management or remediation of contamination for the following reasons:

- no contaminating industries (as per Appendix A, DUAP 1998) have been identified or confirmed in the site history;
- the re-development of the site from a production or dance hall into a cinema complex in the mid 1970's is anticipated to have removed any potential minor contamination through the excavation of a basement on the site; and
- there appears to be no current onsite source of potential contamination due to the identification of a battery powered back-up power system and the lack of identified USTs or diesel powered generators onsite.

The hazardous building materials reports have identified a number of items of hazardous materials and the management and/or removal of these materials must follow the appropriate regulations and codes of practices.

Should you have any queries or require further clarification, please feel free to contact the undersigned on 02 8245 0300 or by email mhodgins@jbsg.com.au.

Yours sincerely:



Mitchell Hodgins
Environmental Scientist
JBS&G

Reviewed/Approved by:



Andrew Lau
Principal Contaminated Land
JBS&G

Attachments:

- 1) Limitations
- 2) Figures
- 3) NSW EPA Records

Attachment 1 – Limitations

This report has been prepared for use by the client who has commissioned the works in accordance with the project brief only, and has been based in part on information obtained from the client and other parties.

The advice herein relates only to this project and all results conclusions and recommendations made should be reviewed by a competent person with experience in environmental investigations, before being used for any other purpose.

JBS&G accepts no liability for use or interpretation by any person or body other than the client who commissioned the works. This report should not be reproduced without prior approval by the client, or amended in any way without prior approval by JBS&G, and should not be relied upon by other parties, who should make their own enquires.

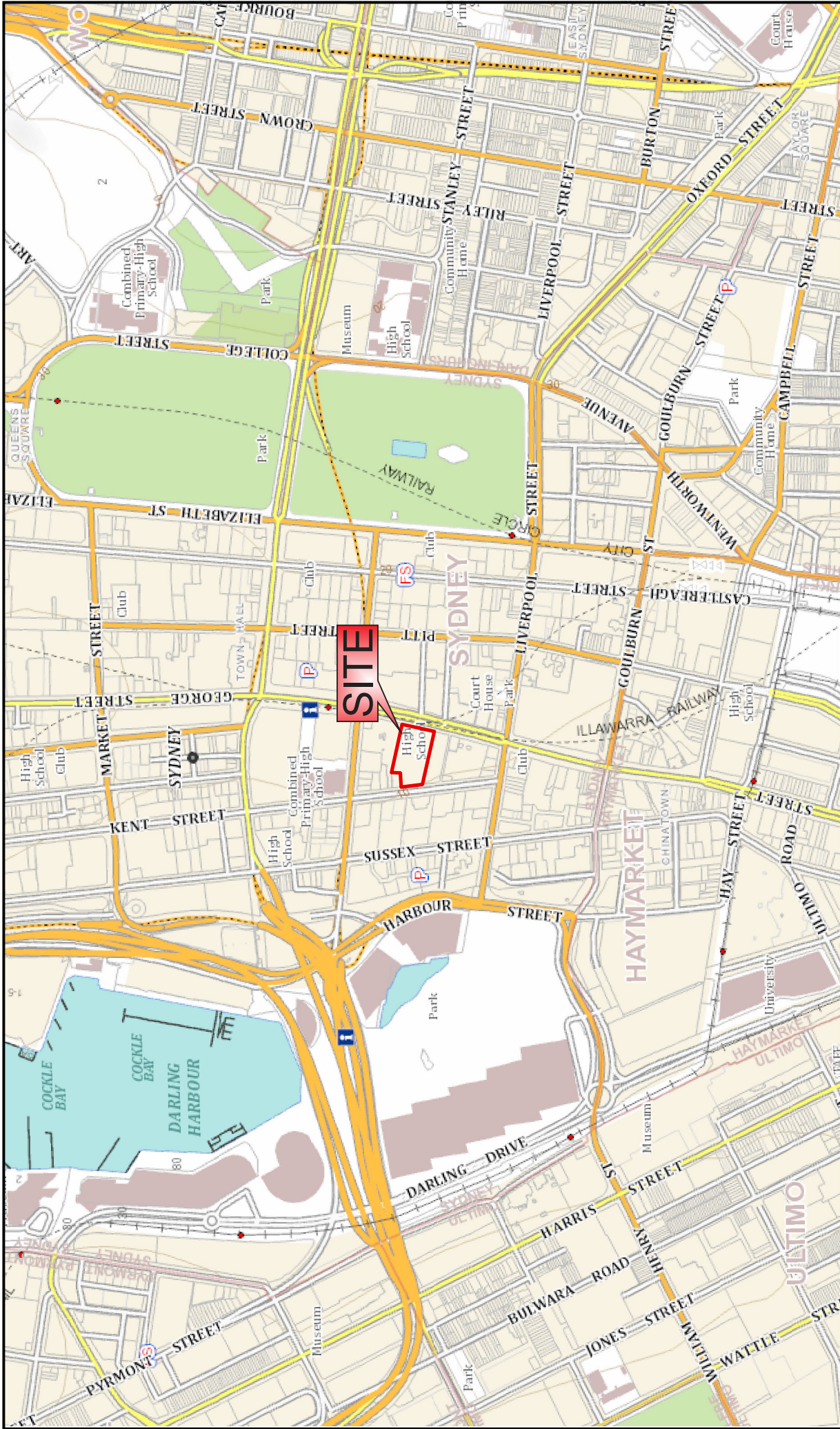
Sampling and chemical analysis of environmental media is based on appropriate guidance documents made and approved by the relevant regulatory authorities. Conclusions arising from the review and assessment of environmental data are based on the sampling and analysis considered appropriate based on the regulatory requirements.

Limited sampling and laboratory analyses were undertaken as part of the investigations undertaken, as described herein. Ground conditions between sampling locations and media may vary, and this should be considered when extrapolating between sampling points. Chemical analytes are based on the information detailed in the site history. Further chemicals or categories of chemicals may exist at the site, which were not identified in the site history and which may not be expected at the site.

Changes to the subsurface conditions may occur subsequent to the investigations described herein, through natural processes or through the intentional or accidental addition of contaminants. The conclusions and recommendations reached in this report are based on the information obtained at the time of the investigations.

This report does not provide a complete assessment of the environmental status of the site, and it is limited to the scope defined herein. Should information become available regarding conditions at the site including previously unknown sources of contamination, JBS&G reserves the right to review the report in the context of the additional information.

Attachment 2 – Figures



Source: Base Image - © SIX Maps www.maps.six.nsw.gov.au, accessed: 04-04-2012



Scale: 1:8,000
Datum: GDA 1984 MGA Zone 56 - AHD

Rev	Description	Dn.	Date
0	Original Issue - L001	LL	04-04-2014

Legend:
 Approximate Site Boundary



Figure 1: Site Location

Client: Mirvac

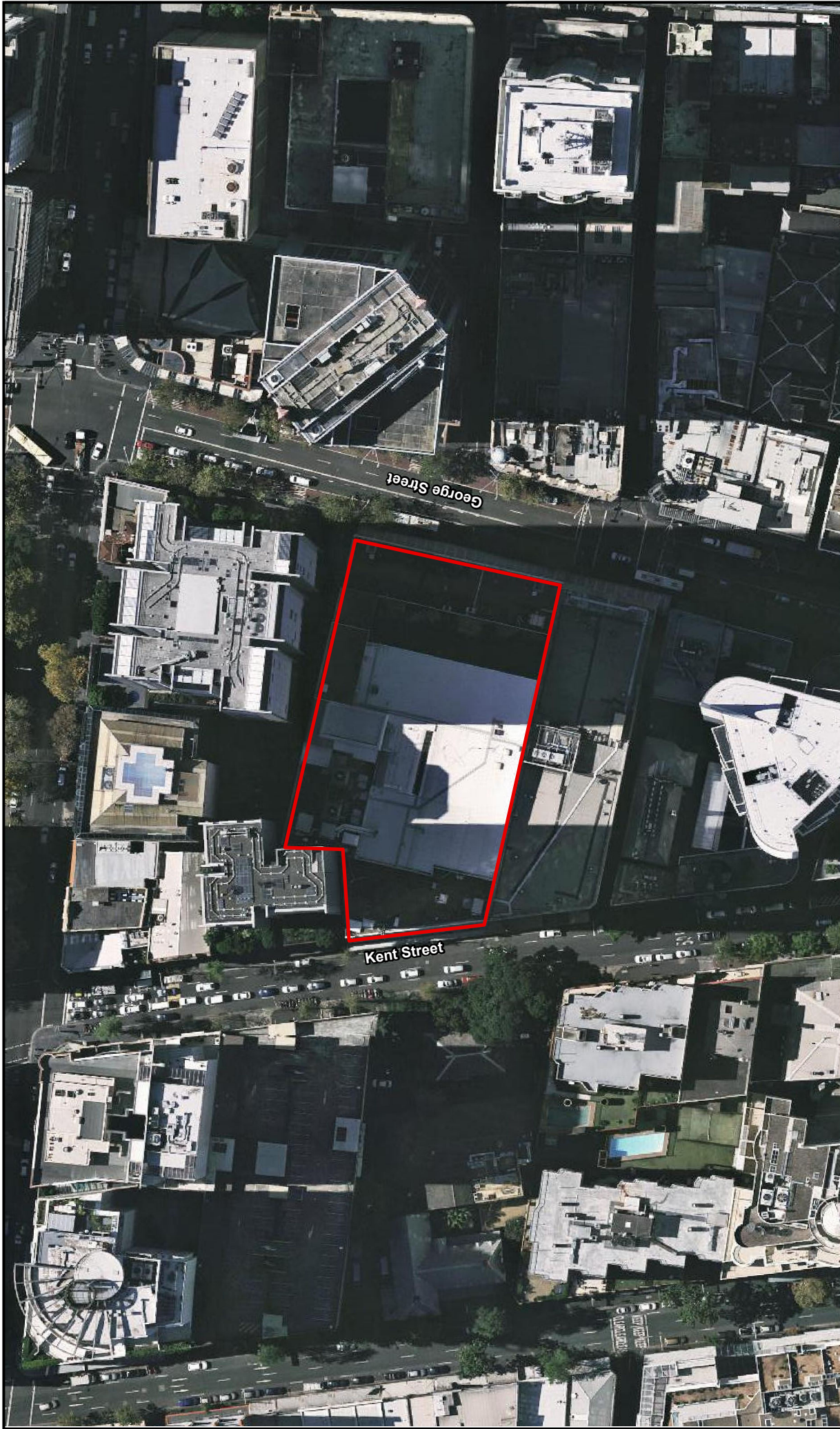
Project: George Street Contamination and Hazmat Assessment

Job No: 43413

File Name: 43413_01



© 2014 JBS&G



Source: Base Image - © SIX Maps www.maps.six.nsw.gov.au, imagery date: 02-05-2012, accessed: 04-04-2012

© 2014 JBSS&G



Scale: 1:1,250

Datum: GDA 1984 MGA Zone 56 - AHD

A4

0 Original Issue - L001 LL 04-04-2014

Rev Description Dm. Date:

Legend:

 Approximate Site Boundary



JBSS&G Figure 2: Site Layout

Client: Mirvac

Project: George Street Contamination and Hazmat Assessment

Job No: 43413

File Name: 43413_02

Attachment 3 – NSW EPA Records

You are here: [Home](#) > [Environment protection licences](#) > [POEO Public Register](#) > [Search for licences, applications and notices](#)

Search results

Your search for: **General Search** with the following criteria

Suburb - Sydney

returned 137 results

[Export to excel](#)

1 of 7 Pages

[Search Again](#)

Number	Name	Location	Type	Status	Issued date
3142	AUSTRALIAN RAIL TRACK CORPORATION LIMITED	GPO BOX 14, SYDNEY, NSW 2001	POEO licence	Issued	20 Dec 2000
1011934	AUSTRALIAN RAIL TRACK CORPORATION LIMITED	GPO BOX 14, SYDNEY, NSW 2001	s,58 Licence Variation	Issued	05 Oct 2001
1015602	AUSTRALIAN RAIL TRACK CORPORATION LIMITED	GPO BOX 14, SYDNEY, NSW 2001	s,58 Licence Variation	Issued	01 May 2002
1023724	AUSTRALIAN RAIL TRACK CORPORATION LIMITED	GPO BOX 14, SYDNEY, NSW 2001	s,58 Licence Variation	Issued	19 Dec 2002
1028108	AUSTRALIAN RAIL TRACK CORPORATION LIMITED	GPO BOX 14, SYDNEY, NSW 2001	s,58 Licence Variation	Issued	01 Jul 2003
1029702	AUSTRALIAN RAIL TRACK CORPORATION LIMITED	GPO BOX 14, SYDNEY, NSW 2001	s,58 Licence Variation	Issued	01 Aug 2003
1030573	AUSTRALIAN RAIL TRACK CORPORATION LIMITED	GPO BOX 14, SYDNEY, NSW 2001	s,58 Licence Variation	Issued	31 Oct 2003
1032289	AUSTRALIAN RAIL TRACK CORPORATION LIMITED	GPO BOX 14, SYDNEY, NSW 2001	s,58 Licence Variation	Issued	09 Dec 2003
1033638	AUSTRALIAN RAIL TRACK CORPORATION LIMITED	GPO BOX 14, SYDNEY, NSW 2001	s,58 Licence Variation	Issued	31 Dec 2003
1040462	AUSTRALIAN RAIL TRACK CORPORATION LIMITED	GPO BOX 14, SYDNEY, NSW 2001	s,58 Licence Variation	Issued	06 Sep 2004
1052119	AUSTRALIAN RAIL TRACK CORPORATION LIMITED	GPO BOX 14, SYDNEY, NSW 2001	s,58 Licence Variation	Issued	22 Sep 2005
1092348	AUSTRALIAN RAIL TRACK CORPORATION LIMITED	GPO BOX 14, SYDNEY, NSW 2001	s,58 Licence Variation	Issued	30 Sep 2008
1093829	AUSTRALIAN RAIL TRACK CORPORATION LIMITED	GPO BOX 14, SYDNEY, NSW 2001	s,58 Licence Variation	Issued	14 Nov 2008
1110207	AUSTRALIAN RAIL TRACK CORPORATION LIMITED	GPO BOX 14, SYDNEY, NSW 2001	s,58 Licence Variation	Issued	23 Dec 2009
1121864	AUSTRALIAN RAIL TRACK CORPORATION LIMITED	GPO BOX 14, SYDNEY, NSW 2001	s,58 Licence Variation	Issued	05 Jan 2011
1123526	AUSTRALIAN RAIL TRACK CORPORATION LIMITED	GPO BOX 14, SYDNEY, NSW 2001	s,58 Licence Variation	Issued	07 Jan 2011
1123725	AUSTRALIAN RAIL TRACK CORPORATION LIMITED	GPO BOX 14, SYDNEY, NSW 2001	s,58 Licence Variation	Issued	14 Jan 2011
1123791	AUSTRALIAN RAIL TRACK CORPORATION LIMITED	GPO BOX 14, SYDNEY, NSW 2001	s,58 Licence Variation	Issued	19 Jan 2011
1123916	AUSTRALIAN RAIL TRACK CORPORATION LIMITED	GPO BOX 14, SYDNEY, NSW 2001	s,58 Licence Variation	Issued	01 Apr 2011
1501777	AUSTRALIAN RAIL TRACK CORPORATION LIMITED	GPO BOX 14, SYDNEY, NSW 2001	s,58 Licence Variation	Issued	28 Sep 2011

Connect

Fer

We
Put

[1234567](#)

03 April 2014

You are here: [Home](#) > [Environment protection licences](#) > [POEO Public Register](#) > [Search for licences, applications and notices](#)

Search results

Your search for: **General Search** with the following criteria

Suburb - Sydney

returned 137 results

[Export to excel](#)

2 of 7 Pages

[Search Again](#)

Number	Name	Location	Type	Status	Issued date
1503705	AUSTRALIAN RAIL TRACK CORPORATION LIMITED	GPO BOX 14, SYDNEY, NSW 2001	s.58 Licence Variation	Issued	13 Jan 2012
1508511	AUSTRALIAN RAIL TRACK CORPORATION LIMITED	GPO BOX 14, SYDNEY, NSW 2001	s.58 Licence Variation	Issued	30 Aug 2012
1509294	AUSTRALIAN RAIL TRACK CORPORATION LIMITED	GPO BOX 14, SYDNEY, NSW 2001	s.58 Licence Variation	Issued	09 Oct 2012
1513680	AUSTRALIAN RAIL TRACK CORPORATION LIMITED	GPO BOX 14, SYDNEY, NSW 2001	Compliance Audit	Complete	22 Apr 2013
1514367	AUSTRALIAN RAIL TRACK CORPORATION LIMITED	GPO BOX 14, SYDNEY, NSW 2001	s.58 Licence Variation	Issued	28 May 2013
1519381	AUSTRALIAN RAIL TRACK CORPORATION LIMITED	GPO BOX 14, SYDNEY, NSW 2001	s.58 Licence Variation	Issued	20 Jan 2014
6847	AUSTRALIAN RED CROSS SOCIETY	153 CLARENCE STREET, SYDNEY, NSW 2000	POEO licence	No longer in force	30 May 2000
1019130	AUSTRALIAN RED CROSS SOCIETY	153 CLARENCE STREET, SYDNEY, NSW 2000	s.58 Licence Variation	Issued	25 Jul 2002
1042818	AUSTRALIAN RED CROSS SOCIETY	153 CLARENCE STREET, SYDNEY, NSW 2000	s.58 Licence Variation	Issued	03 Dec 2004
1055199	AUSTRALIAN RED CROSS SOCIETY	153 CLARENCE STREET, SYDNEY, NSW 2000	s.58 Licence Variation	Issued	11 Jan 2006
11804	BILFINGER BERGER AG	-, SYDNEY, NSW 2000	POEO licence	Surrendered	24 Dec 2002
1025147	BILFINGER BERGER AG	-, SYDNEY, NSW 2000	s.58 Licence Variation	Issued	24 Feb 2003
1025478	BILFINGER BERGER AG	-, SYDNEY, NSW 2000	s.58 Licence Variation	Issued	07 Mar 2003
1025596	BILFINGER BERGER AG	-, SYDNEY, NSW 2000	s.58 Licence Variation	Issued	17 Mar 2003
1026044	BILFINGER BERGER AG	-, SYDNEY, NSW 2000	s.58 Licence Variation	Issued	04 Apr 2003
1026884	BILFINGER BERGER AG	-, SYDNEY, NSW 2000	s.58 Licence Variation	Issued	16 May 2003
1027585	BILFINGER BERGER AG	-, SYDNEY, NSW 2000	s.58 Licence Variation	Issued	28 May 2003
1027906	BILFINGER BERGER AG	-, SYDNEY, NSW 2000	s.58 Licence Variation	Issued	04 Jun 2003
1027956	BILFINGER BERGER AG	-, SYDNEY, NSW 2000	s.58 Licence Variation	Issued	20 Jun 2003
1029605	BILFINGER BERGER AG	-, SYDNEY, NSW 2000	s.58 Licence Variation	Issued	06 Aug 2003

Connect

Fer

We
Put

[1234567](#)

03 April 2014

You are here: [Home](#) > [Environment protection licences](#) > [POEO Public Register](#) > [Search for licences, applications and notices](#)

Search results

Your search for: **General Search** with the following criteria

Suburb - Sydney

returned 137 results

[Export to excel](#)

3 of 7 Pages

[Search Again](#)

Number	Name	Location	Type	Status	Issued date
1029978	BILFINGER BERGER AG	-, SYDNEY, NSW 2000	s.58 Licence Variation	Issued	28 Aug 2003
1030731	BILFINGER BERGER AG	-, SYDNEY, NSW 2000	s.58 Licence Variation	Issued	11 Sep 2003
1031044	BILFINGER BERGER AG	-, SYDNEY, NSW 2000	s.58 Licence Variation	Issued	19 Sep 2003
1031358	BILFINGER BERGER AG	-, SYDNEY, NSW 2000	s.58 Licence Variation	Issued	01 Oct 2003
1031595	BILFINGER BERGER AG	-, SYDNEY, NSW 2000	s.58 Licence Variation	Issued	16 Oct 2003
1031939	BILFINGER BERGER AG	-, SYDNEY, NSW 2000	s.58 Licence Variation	Issued	22 Oct 2003
1032103	BILFINGER BERGER AG	-, SYDNEY, NSW 2000	s.58 Licence Variation	Issued	31 Oct 2003
1032913	BILFINGER BERGER AG	-, SYDNEY, NSW 2000	s.58 Licence Variation	Issued	05 Dec 2003
1033145	BILFINGER BERGER AG	-, SYDNEY, NSW 2000	s.58 Licence Variation	Issued	12 Dec 2003
1033349	BILFINGER BERGER AG	-, SYDNEY, NSW 2000	s.58 Licence Variation	Issued	19 Dec 2003
1033988	BILFINGER BERGER AG	-, SYDNEY, NSW 2000	s.58 Licence Variation	Issued	19 Jan 2004
1034134	BILFINGER BERGER AG	-, SYDNEY, NSW 2000	s.58 Licence Variation	Issued	29 Jan 2004
1034422	BILFINGER BERGER AG	-, SYDNEY, NSW 2000	s.58 Licence Variation	Issued	13 Feb 2004
1034629	BILFINGER BERGER AG	-, SYDNEY, NSW 2000	s.58 Licence Variation	Issued	19 Feb 2004
1035021	BILFINGER BERGER AG	-, SYDNEY, NSW 2000	s.58 Licence Variation	Issued	02 Mar 2004
1035389	BILFINGER BERGER AG	-, SYDNEY, NSW 2000	s.58 Licence Variation	Issued	26 Mar 2004
1035821	BILFINGER BERGER AG	-, SYDNEY, NSW 2000	s.58 Licence Variation	Issued	08 Apr 2004
1036225	BILFINGER BERGER AG	-, SYDNEY, NSW 2000	s.58 Licence Variation	Issued	16 Apr 2004
1036631	BILFINGER BERGER AG	-, SYDNEY, NSW 2000	s.58 Licence Variation	Issued	04 May 2004
1037069	BILFINGER BERGER AG	-, SYDNEY, NSW 2000	s.58 Licence Variation	Issued	15 May 2004

Connect

Fei

We
Put

[1234567](#)

03 April 2014

You are here: [Home](#) > [Environment protection licences](#) > [POEO Public Register](#) > [Search for licences, applications and notices](#)

Search results

Your search for: **General Search** with the following criteria

Suburb - Sydney

returned 137 results

[Export to excel](#)

4 of 7 Pages

[Search Again](#)

Number	Name	Location	Type	Status	Issued date
1037484	BILFINGER BERGER AG	-, SYDNEY, NSW 2000	s.58 Licence Variation	Issued	27 May 2004
1037689	BILFINGER BERGER AG	-, SYDNEY, NSW 2000	s.58 Licence Variation	Issued	04 Jun 2004
1037887	BILFINGER BERGER AG	-, SYDNEY, NSW 2000	s.58 Licence Variation	Issued	11 Jun 2004
1038254	BILFINGER BERGER AG	-, SYDNEY, NSW 2000	s.58 Licence Variation	Issued	24 Jun 2004
1038434	BILFINGER BERGER AG	-, SYDNEY, NSW 2000	s.58 Licence Variation	Issued	12 Jul 2004
1039534	BILFINGER BERGER AG	-, SYDNEY, NSW 2000	s.58 Licence Variation	Issued	13 Aug 2004
1039940	BILFINGER BERGER AG	-, SYDNEY, NSW 2000	s.58 Licence Variation	Issued	03 Sep 2004
1040577	BILFINGER BERGER AG	-, SYDNEY, NSW 2000	s.58 Licence Variation	Issued	10 Sep 2004
1040663	BILFINGER BERGER AG	-, SYDNEY, NSW 2000	s.58 Licence Variation	Issued	17 Sep 2004
1040918	BILFINGER BERGER AG	-, SYDNEY, NSW 2000	s.58 Licence Variation	Issued	27 Sep 2004
1041494	BILFINGER BERGER AG	-, SYDNEY, NSW 2000	s.58 Licence Variation	Issued	15 Oct 2004
1041731	BILFINGER BERGER AG	-, SYDNEY, NSW 2000	s.58 Licence Variation	Issued	25 Oct 2004
1041890	BILFINGER BERGER AG	-, SYDNEY, NSW 2000	s.58 Licence Variation	Issued	29 Oct 2004
1042459	BILFINGER BERGER AG	-, SYDNEY, NSW 2000	s.58 Licence Variation	Issued	22 Nov 2004
1042474	BILFINGER BERGER AG	-, SYDNEY, NSW 2000	s.58 Licence Variation	Issued	08 Dec 2004
1043143	BILFINGER BERGER AG	-, SYDNEY, NSW 2000	s.58 Licence Variation	Issued	17 Dec 2004
1043584	BILFINGER BERGER AG	-, SYDNEY, NSW 2000	s.58 Licence Variation	Issued	06 Jan 2005
1043836	BILFINGER BERGER AG	-, SYDNEY, NSW 2000	s.58 Licence Variation	Issued	21 Jan 2005
1044361	BILFINGER BERGER AG	-, SYDNEY, NSW 2000	s.58 Licence Variation	Issued	11 Feb 2005
1044772	BILFINGER BERGER AG	-, SYDNEY, NSW 2000	s.58 Licence Variation	Issued	23 Feb 2005

Connect

Fei

We
Put

[1234567](#)

03 April 2014

You are here: [Home](#) > [Environment protection licences](#) > [POEO Public Register](#) > [Search for licences, applications and notices](#)

Search results

Your search for: **General Search** with the following criteria

Suburb - Sydney

returned 137 results

[Export to excel](#)

5 of 7 Pages

[Search Again](#)

Number	Name	Location	Type	Status	Issued date
1044862	BILFINGER BERGER AG	-, SYDNEY, NSW 2000	s.58 Licence Variation	Issued	25 Feb 2005
1044898	BILFINGER BERGER AG	-, SYDNEY, NSW 2000	s.58 Licence Variation	Issued	28 Feb 2005
1044953	BILFINGER BERGER AG	-, SYDNEY, NSW 2000	s.58 Licence Variation	Issued	01 Mar 2005
1045026	BILFINGER BERGER AG	-, SYDNEY, NSW 2000	s.58 Licence Variation	Issued	03 Mar 2005
1045386	BILFINGER BERGER AG	-, SYDNEY, NSW 2000	s.58 Licence Variation	Issued	14 Mar 2005
1045454	BILFINGER BERGER AG	-, SYDNEY, NSW 2000	s.58 Licence Variation	Issued	15 Mar 2005
1045543	BILFINGER BERGER AG	-, SYDNEY, NSW 2000	s.58 Licence Variation	Issued	18 Mar 2005
1046027	BILFINGER BERGER AG	-, SYDNEY, NSW 2000	s.58 Licence Variation	Issued	01 Apr 2005
1046188	BILFINGER BERGER AG	-, SYDNEY, NSW 2000	s.58 Licence Variation	Issued	08 Apr 2005
1046440	BILFINGER BERGER AG	-, SYDNEY, NSW 2000	s.58 Licence Variation	Issued	12 Apr 2005
1046466	BILFINGER BERGER AG	-, SYDNEY, NSW 2000	s.58 Licence Variation	Issued	15 Apr 2005
1046583	BILFINGER BERGER AG	-, SYDNEY, NSW 2000	s.58 Licence Variation	Issued	18 Apr 2005
1046924	BILFINGER BERGER AG	-, SYDNEY, NSW 2000	s.58 Licence Variation	Issued	21 Apr 2005
1047498	BILFINGER BERGER AG	-, SYDNEY, NSW 2000	s.58 Licence Variation	Issued	11 May 2005
1047630	BILFINGER BERGER AG	-, SYDNEY, NSW 2000	s.58 Licence Variation	Issued	25 May 2005
1048418	BILFINGER BERGER AG	-, SYDNEY, NSW 2000	s.58 Licence Variation	Issued	16 Jun 2005
1050424	BILFINGER BERGER AG	-, SYDNEY, NSW 2000	s.58 Licence Variation	Issued	04 Aug 2005
1050625	BILFINGER BERGER AG	-, SYDNEY, NSW 2000	s.58 Licence Variation	Issued	19 Aug 2005
1056208	BILFINGER BERGER AG	-, SYDNEY, NSW 2000	s.58 Licence Variation	Issued	17 Feb 2006
1057565	BILFINGER BERGER AG	-, SYDNEY, NSW 2000	s.58 Licence Variation	Issued	17 Mar 2006

Connect

Fei

We
Put

[1234567](#)

03 April 2014

You are here: [Home](#) > [Environment protection licences](#) > [POEO Public Register](#) > [Search for licences, applications and notices](#)

Search results

Your search for: **General Search** with the following criteria

Suburb - Sydney

returned 137 results

[Export to excel](#)

6 of 7 Pages

[Search Again](#)

Number	Name	Location	Type	Status	Issued date		
1521	CARLTON & UNITED BREWERIES (N S W) PTY LTD	26-98 BROADWAY, SYDNEY, NSW 2000	POEO licence	Surrendered	24 Mar 2000		
1012149	CARLTON & UNITED BREWERIES (N S W) PTY LTD	26-98 BROADWAY, SYDNEY, NSW 2000	s.58 Licence Variation	Issued	23 Nov 2001		
4310	CEMENT AUSTRALIA HOLDINGS PTY LTD	SOMMERVILLE ROAD, SYDNEY, NSW 2000	POEO licence	Issued	29 Aug 2000		
1008194	CEMENT AUSTRALIA HOLDINGS PTY LTD	SOMMERVILLE ROAD, SYDNEY, NSW 2000	s.58 Licence Variation	Issued	11 Sep 2001		
1105088	CEMENT AUSTRALIA HOLDINGS PTY LTD	SOMMERVILLE ROAD, SYDNEY, NSW 2000	s.58 Licence Variation	Issued	02 Oct 2009		
3085763872	JOHN HOLLAND PTY LTD	SYDNEY, NSW 2000	Penalty Notice	Withdrawn			
20079	JOHN HOLLAND PTY LTD	SYDNEY, NSW 2000	POEO licence	Issued	02 Mar 2012		
1504855	JOHN HOLLAND PTY LTD	SYDNEY, NSW 2000	s.58 Licence Variation	Issued	13 Mar 2012	Connect	Fe
1507027	JOHN HOLLAND PTY LTD	SYDNEY, NSW 2000	s.58 Licence Variation	Issued	28 Jun 2012		We
3085764606	JOHN HOLLAND PTY LTD	SYDNEY, NSW 2000	Penalty Notice	Issued	03 Jul 2012		Put
4653	LUHRMANN ENVIRONMENT MANAGEMENT PTY LTD	-, SYDNEY, NSW 2000	POEO licence	Issued	06 Sep 2000		
1021590	LUHRMANN ENVIRONMENT MANAGEMENT PTY LTD	-, SYDNEY, NSW 2000	s.58 Licence Variation	Issued	22 Nov 2002		
7180	PATRICK STEVEDORES OPERATIONS PTY LIMITED	GATE 5 HICKSON ROAD, SYDNEY, NSW 2000	POEO licence	Surrendered	25 Feb 2000		
1028037	PATRICK STEVEDORES OPERATIONS PTY LIMITED	GATE 5 HICKSON ROAD, SYDNEY, NSW 2000	s.58 Licence Variation	Issued	27 Jun 2003		
4838	ROBERT ORCHARD	-, SYDNEY, NSW 2000	POEO licence	Surrendered	07 Sep 2000		
1009568	ROBERT ORCHARD	-, SYDNEY, NSW 2000	s.58 Licence Variation	Issued	17 Sep 2001		
6193	ROYAL BOTANIC GARDENS AND DOMAIN TRUST	MRS MACQUARIES ROAD, SYDNEY, NSW 2000	POEO licence	No longer in force	04 Aug 2000		
1006659	ROYAL BOTANIC GARDENS AND DOMAIN TRUST	MRS MACQUARIES ROAD, SYDNEY, NSW 2000	s.96 Prevention Notice	Issued	24 Jun 2003		
1047181	ROYAL BOTANIC GARDENS AND DOMAIN TRUST	MRS MACQUARIES ROAD, SYDNEY, NSW 2000	s.58 Licence Variation	Issued	10 May 2005		
1066372	ROYAL BOTANIC GARDENS AND DOMAIN TRUST	MRS MACQUARIES ROAD, SYDNEY, NSW 2000	s.110 Variation of Prevention Notice	Issued	30 Oct 2006		

[1234567](#)

03 April 2014

You are here: [Home](#) > [Environment protection licences](#) > [POEO Public Register](#) > [Search for licences, applications and notices](#)

Search results

Your search for: **General Search** with the following criteria

Suburb - Sydney

returned 137 results

[Export to excel](#)

7 of 7 Pages

[Search Again](#)

Number	Name	Location	Type	Status	Issued date		
1096585	ROYAL BOTANIC GARDENS AND DOMAIN TRUST	MRS MACQUARIES ROAD, SYDNEY, NSW 2000	s.110 Variation of Prevention Notice	Issued	05 Feb 2009		
1511045	ROYAL BOTANIC GARDENS AND DOMAIN TRUST	MRS MACQUARIES ROAD, SYDNEY, NSW 2000	s.110 Variation of Prevention Notice	Issued	21 Dec 2012		
7370	SOUTH EASTERN SYDNEY AND ILLAWARRA AREA HEALTH SERVICE	8 MACQUARIE STREET, SYDNEY, NSW 2000	POEO licence	No longer in force	30 May 2000		
1018977	SOUTH EASTERN SYDNEY AND ILLAWARRA AREA HEALTH SERVICE	8 MACQUARIE STREET, SYDNEY, NSW 2000	s.58 Licence Variation	Issued	25 Jul 2002		
1041473	SOUTH EASTERN SYDNEY AND ILLAWARRA AREA HEALTH SERVICE	8 MACQUARIE STREET, SYDNEY, NSW 2000	s.58 Licence Variation	Issued	13 Oct 2004		
4091	SYDNEY OPERA HOUSE TRUST	BENNELONG POINT, SYDNEY, NSW 2000	POEO licence	Surrendered	10 Jan 2002		
11517	SYDNEY SHIP REPAIR & ENGINEERING PTY LTD	Goat Island, SYDNEY, NSW 2000	POEO licence	Issued	09 Nov 2001	Connect	Fe
1014577	SYDNEY SHIP REPAIR & ENGINEERING PTY LTD	Goat Island, SYDNEY, NSW 2000	s.58 Licence Variation	Issued	06 Feb 2002		We
1041143	SYDNEY SHIP REPAIR & ENGINEERING PTY LTD	Goat Island, SYDNEY, NSW 2000	s.58 Licence Variation	Issued	26 Apr 2005		Put
1050231	SYDNEY SHIP REPAIR & ENGINEERING PTY LTD	Goat Island, SYDNEY, NSW 2000	s.58 Licence Variation	Issued	31 Aug 2005		
1065958	SYDNEY SHIP REPAIR & ENGINEERING PTY LTD	Goat Island, SYDNEY, NSW 2000	s.91 Clean Up Notice	Issued	12 Dec 2006		
1067925	SYDNEY SHIP REPAIR & ENGINEERING PTY LTD	Goat Island, SYDNEY, NSW 2000	s.58 Licence Variation	Issued	04 Jul 2007		
1095725	SYDNEY SHIP REPAIR & ENGINEERING PTY LTD	Goat Island, SYDNEY, NSW 2000	s.58 Licence Variation	Issued	16 Sep 2009		
1114245	SYDNEY SHIP REPAIR & ENGINEERING PTY LTD	Goat Island, SYDNEY, NSW 2000	s.58 Licence Variation	Issued	26 Jul 2010		
1509194	SYDNEY SHIP REPAIR & ENGINEERING PTY LTD	Goat Island, SYDNEY, NSW 2000	s.58 Licence Variation	Issued	22 Nov 2012		
10420	THE HOSPITALS CONTRIBUTION FUND OF AUSTRALIA LTD	403 George Street, SYDNEY, NSW 2000	POEO licence	No longer in force	08 Feb 2000		
1034575	THE HOSPITALS CONTRIBUTION FUND OF AUSTRALIA LTD	403 George Street, SYDNEY, NSW 2000	s.58 Licence Variation	Issued	17 Feb 2004		

[1234567](#)

03 April 2014

You are here: [Home](#) > [Contaminated land](#) > [Record of notices](#)

Search results

Your search for: LGA: Sydney City Council

Matched 31 notices relating to 17 sites.

[Search Again](#)

[Refine Search](#)

Suburb	Address	Site Name	Notices related to this site
Alexandria	Off Huntley Street	Alexandra Canal	2 current
Alexandria	10-24 Ralph Street	Australia Post, Alexandria	1 current
Alexandria	49-59 O'Riordan Street	Cadbury Schweppes Site	1 former
Alexandria	2 Doody Street	Land adjacent to Australia Post, Alexandria	1 current
Eveleigh	Off Burren Street	Macdonaldtown Triangle	2 former
Millers Point	36 Hickson Road	Millers Point Gasworks	2 former
Millers Point	Wharves 5 and 7, Hickson Road	Millers Point Gasworks	2 current and 2 former
Millers Point	Hickson Road	Millers Point Gasworks	2 current and 2 former
Newtown	81 Wilson Street	MBL Service Station	4 former
Newtown	79 Wilson Street	Property Adjacent to MBL Service Station	3 former
Paddington	59 Oxford Street	7 Eleven Service Station, Paddington	1 current
Pymont	Pymont Road	Pymont Power Station	7 former
Waterloo	903-921 Bourke Street	Affected by Lawrence Dry Cleaners	4 current and 2 former
Waterloo	901 Bourke Street	Affected by Lawrence Dry Cleaners	4 current and 2 former
Waterloo	895-899 Bourke Street	Affected by Lawrence Dry Cleaners	4 current and 2 former
Waterloo	207-229 Young Street	Affected by Lawrence Dry Cleaners	4 current and 2 former
Waterloo	887-893 Bourke Street	Lawrence Dry Cleaners	4 current and 2 former

Connect

Fe

We
Put

List of NSW Contaminated Sites Notified to EPA as of 14 February 2014

Background

In response to 2008 amendments to the *Contaminated Land Management Act 1997* (CLM Act) clarifying the Section 60 duty to report contaminated sites, the Environment Protection Authority (EPA) has received 1,063 notifications (as 14 February 2014) from owners or occupiers of sites where they believe the site is contaminated.

A strategy to systematically assess, prioritise and respond to these notifications has been developed by the EPA. This strategy acknowledges the EPA's obligations to make information available to the public under *Government Information (Public Access) Act 2009*.

When a site is notified to the EPA, it may be accompanied by detailed site reports where the owner has been proactive in addressing the contamination and its source. However, often there is minimal information on the nature or extent of the contamination.

For some notifications, the information indicates the contamination is securely immobilised within the site, such as under a building or carpark, and is not currently causing any offsite consequences to the community or environment. Such sites would still need to be cleaned up, but this could be done in conjunction with any subsequent building or redevelopment of the land. These sites may not require intervention under the CLM Act, but could be dealt with through the planning and development consent process.

Where indications are that the nominated site is causing actual harm to the environment or an unacceptable offsite impact (i.e. it is a "significantly contaminated site"), the EPA would apply the regulatory provisions of the CLM Act to have the responsible polluter and/or landowner investigate and remediate the site.

As such, the sites notified to the EPA and presented in the following table are at various stages of the assessment and/or remediation process. Understanding the nature of the underlying contamination, its implications and implementing a remediation program where required, can take a considerable period of time. The tables provide an indication, in relation to each nominated site, as to the management status of that particular site. Further detailed information may be available from the EPA or the responsible landowner.

The following questions and answers may assist those interested in this issue:

Frequently asked questions

What is the difference between the "List of NSW Contaminated Sites Notified to the EPA" and the "Contaminated Land: Record of Notices"?

A site will be on the Contaminated Land: Record of Notices only if the EPA has issued a regulatory notice in relation to the site under the *Contaminated Land Management Act 1997*.

The sites appearing on this “List of NSW contaminated sites notified to the EPA” indicate that the notifiers consider that the sites are contaminated and warrant reporting to the EPA. However, the contamination may or may not be significant enough to warrant regulation by the EPA. The EPA needs to review and, if necessary, obtain more information before it can make a determination as to whether the site warrants regulation.

Why my site appears on the list?

Your site appears on the list because of one or more of the following reasons:

- The site owner and/or the person partly or fully responsible for causing the contamination notified to the EPA about the contamination under Section 60 of the *Contaminated Land Management Act 1997*. In other words, the site owner or the “polluter” believes the site is contaminated.
- The EPA has been notified via other means and is satisfied that the site is or was contaminated.

Does the list contain all contaminated sites in NSW?

No. The list only contains contaminated sites that the EPA is aware of, with regard to its regulatory role under the CLM Act. An absence of a site from the list does not necessarily imply the site is not contaminated.

The EPA relies upon responsible parties to notify contaminated sites.

How are these notified contaminated sites managed by the EPA?

There are different ways that the EPA manages these notified contaminated sites. First, an initial assessment is carried out by the EPA. At the completion of the initial assessment, the EPA may take one or more than one of the following management approaches:

- The contamination warrants the EPA’s direct regulatory intervention either under the *Contaminated Land Management Act 1997* or the *Protection of the Environment Operations Act 1997* (POEO Act), or both. Information about current or past regulatory action on this site can be found on EPA website.
- The contamination with respect to the current use or approved use of the site, as defined under the *Contaminated Land Management Act 1997*, is not significant enough that it warrants EPA regulation.
- The contamination does not require EPA regulation and can be managed by a planning approval process.
- The contamination is related to an operational Underground Petroleum Storage System, such as a service station or fuel depot. The contamination may be managed under the POEO Act and the Protection of the Environment Operation (Underground Petroleum Storage Systems) Regulation 2008.
- The contamination is being managed under a specifically tailored program operated by another agency (for example the Department of Industry and Investment’s *Derelict Mines Program*).

I am the owner of a site that appears on the list. What should I do?

First of all, you should ensure the current use of the site is compatible with the site contamination. Secondly, if the site is the subject of EPA regulation, make sure you comply with the regulatory requirements, and you have considered your obligations to notify other parties who may be affected.

If you have any concerns, contact us and we may be able to offer you general advice, or direct you to accredited professionals who can assist with specific issues.

I am a prospective buyer of a site that appears on the list. What should I do?

You should seek advice from the vendor to put the contamination issue into perspective. You may need to seek independent expert advice.

The information provided in the list, particularly the EPA Site Management Class, is meant to be indicative only, and a starting point for your own assessment. Site contamination as a legacy of past site uses is not uncommon, particularly in an urbanised environment. If the contamination on a site is properly remediated or managed, it may not materially impact upon the intended future use of the site. However, each site needs to be considered in context.

List of NSW Contaminated Sites Notified to the EPA

Disclaimer

The EPA has taken all reasonable care to ensure that the information in the list of contaminated sites notified to the EPA (the list) is complete and correct. The EPA does not, however, warrant or represent that the list is free from errors or omissions or that it is exhaustive.

The EPA may, without notice, change any or all of the information in the list at any time.

You should obtain independent advice before you make any decision based on the information in the list.

The list is made available on the understanding that the EPA, its servants and agents, to the extent permitted by law, accept no responsibility for any damage, cost, loss or expense incurred by you as a result of:

1. any information in the list; or
2. any error, omission or misrepresentation in the list; or
3. any malfunction or failure to function of the list;
4. without limiting (2) or (3) above, any delay, failure or error in recording, displaying or updating information.

THE EPA Site Management Class	Explanation
A	The contamination of this site is being assessed by the EPA. Sites which have yet to be determined as significant enough to warrant regulation may result in no further regulation under the <i>Contaminated Land Management Act 1997</i> .
B	The EPA is awaiting further information to progress its initial assessment of this site.
C	The contamination of this site is or was regulated under the <i>Contaminated Land Management Act 1997</i> . Information about current or past regulatory action on this site can be found on the EPA website (www.epa.nsw.gov.au) - Environmental Issues - Contaminated Land - Record of EPA notices.
D	The contamination of this site is or was regulated under the <i>Protection of the Environment Operations Act 1997</i> . Information about current or past regulatory action on this site can be found on the EPA website (www.epa.nsw.gov.au) - Environmental Issues - Environment Protection Licences - POEO public register.
E	This is a premises with an operational Underground Petroleum Storage System, such as a service station or fuel depot. The contamination of this site is managed under the <i>Protection of the Environment Operations Act 1997</i> and the Protection of the Environment Operations (Underground Petroleum Storage Systems) Regulation 2008.
F	The contamination of this site is managed by a planning approval process. The consent authority is either the local council or a government agency, such as the Department of Planning.
G	Based on the information made available to the EPA to date, the contamination of this site is considered by the EPA to be not significant enough to warrant regulatory intervention under the <i>Contaminated Land Management Act 1997</i>
H	Initial assessment completed. The contamination of this site is to be regulated by the EPA

Suburb/City	Site Description	Site Address	Activity that caused the contamination	s60 Form Received	EPA Initial Assessment	EPA Management Class
Abbotsford	Former Gasworks	43 St Albans Street	Gasworks	Yes	Completed	C
Abbotsford	Former Gasworks	80-81 Wymston Pde and 35 and 41 St Albans St	Gasworks	No	Completed	G
Abbotsford	Former Gasworks	82, 83, 84 Wymston Pde, & 37, 39, 43, 45 St Albans St	Gasworks	Yes	Completed	C
Abbotsford	Former Gasworks	83 Wymston Parade	Gasworks	Yes	Completed	C
Abbotsford	Former Gasworks	85 Wymston Parade	Gasworks	No	Completed	G
Aberdeen	Former Transport Depot	87-89 St Andrew Street	Other Industry	Yes	Completed	G
Albion Park	Caltex Service Station	222 Tongarra Rd	Service Station	Yes	In progress	B
Albion Park Rail	Caltex Service Station	172-174 Princes Highway	Service Station	Yes	In progress	B
Albion Park Rail	Caltex Service Station	31 Princes Hwy	Service Station	Yes	In progress	B
Albion Park Rail	Former Timber Storage Area	36 Rivulet Crescent	Other Industry	Yes	Completed	G
Albury	Mobil Depot, Railway Place Albury	1 Railway Place	Other Petroleum	Yes	In Progress	B
Albury	Former Thales Australia site, Albury	161 Fallon Street	Other Industry	No	Completed	C
Albury	Former Gasworks and surrounding commercial land.	441 Kiewa Street	Gasworks	Yes	Completed	C F
Albury	SRA Land	448 and 452 Young Street	Unclassified	Yes	Completed	G
Albury	Coles Express Albury	465 Guinea Street	Service Station	Yes	In progress	A
Albury	SRA Land, 514 to 526 Young Street	514 to 526 Young Street	Other Petroleum	Yes	In Progress	B
Albury	Woolworths Petrol	515 Young Street	Service Station	Yes	In progress	A
Albury	Former Caltex Service Station	624 Young Street	Service Station	Yes	Completed	C D E
Albury	Caltex Service Station	79 Union Rd	Service Station	Yes	In progress	B
Albury	Former Caltex Service Station	842 David Street	Service Station	Yes	In progress	A
Albury	Albury Plaza	Cnr Smollett and Townsend	Other Industry	No	Completed	F G
Albury	Caltex Service Station	Dean St Cnr Creek St	Service Station	Yes	In progress	B
Albury	Mobil Depot	Hangar 8, Ogden Place	Other Petroleum	Yes	In Progress	E

Suburb/City	Site Description	Site Address	Activity that caused the contamination	s60 Form Received	EPA Initial Assessment	EPA Management Class
Alexandria	Alexandria Canal Sediments		Unclassified	Yes	Completed	C
Alexandria	Australia Post	10-24 Ralph Street	Other Industry	Yes	Completed	F
Alexandria	Caltex Service Station	133 Wyndham St, cnr McEvoy Street	Service Station	Yes	In progress	B
Alexandria	Perry Park	1B Maddox Street	Landfill	Yes	In progress	A
Alexandria	Former Mobil Service Station	20 O'Riordan Street	Service Station	Yes	Completed	G
Alexandria	Australian Refined Alloys	202-212 Euston Rd	Metal Industry	yes	Completed	D
Alexandria	Mascot Developments	494-504 Gardeners Rd	Other Industry	Yes	Completed	G
Alexandria	Former Cadbury Schweppes	49-59 O'Riordan Street	Other Industry	Yes	Completed	C G
Alexandria	Alexandria GoGas	562 Botany Road	Service Station	Yes	Completed	E G
Alstonville	Caltex Service Station	73 Main St	Service Station	Yes	In progress	B
Ambarvale	Caltex Service Station	37 Woodhouse Drive	Service Station	Yes	In progress	B
Annandale	Shell Coles Express Service Station	124-126 Johnston Street	Service Station	Yes	In Progress	E
Annandale	Mobil Service Station	198 Parramatta Road	Service Station	Yes	Completed	G
Appin	Elladale Creek Aqueduct Upper Canal	Macquariedale Road	Unclassified	Yes	Completed	G
Appin	West Cliff Colliery	Wedderburn Road	Other Petroleum	yes	Completed	G
Ardlethan	Landmark Fertiliser storage	24-26 Ariah St	Chemical Industry	Yes	In progress	A
Armidale	Former Mobil Depot	132 Niagara Street	Other Petroleum	yes	Completed	C
Armidale	Former Shell Depot	134 Niagara Street	Other Petroleum	Yes	In progress	A
Armidale	Caltex Service Station	144 Marsh St	Service Station	Yes	In progress	B
Armidale	Caltex Service Station	146 Miller St	Service Station	Yes	In progress	B
Armidale	Caltex Service Station	2-4 Marsh Street	Service Station	Yes	In progress	B
Armidale	Shell Service Station	93 Marsh Street	Service Station	No	Completed	G
Armidale	Parklands near the former gasworks	Beardy Street and Allingham Street	Gasworks	Yes	Completed	G

Suburb/City	Site Description	Site Address	Activity that caused the contamination	s60 Form Received	EPA Initial Assessment	EPA Management Class
Armidale	Gasworks and portion of Harris Park	Corner of Beardy Street and Allingham Street	Gasworks	Yes	Completed	C G
Armidale	Martin Street Estate, Lot 3	Lot 3 Martin Street	Other Industry	No	Completed	G
Armidale	Martin Street , Crown Land	Martin Street	Other Industry	No	Completed	C G
Armidale	Martin Street Estate	Martin Street	Other Industry	No	Completed	G
Armidale	RTA land adjoining Martin Street estate	Martin Street	Other Industry	No	Completed	C G
Armidale	Mobil Armidale Service Station and Former Depot	McLennan Street	Service Station	Yes	In Progress	A
Armidale	Caltex Service Station	New England Highway	Service Station	Yes	In progress	B
Armidale	Caltex Service Station	Queen Elizabeth Drive	Service Station	Yes	In progress	B
Arnccliffe	7 Eleven Arnccliffe	28 Princes Highway	Service Station	Yes	In progress	A
Artarmon	BP Artarmon	432 Pacific Highway	Service Station	Yes	In Progress	A
Artarmon	Mobil Service Station	477 Pacific Highway	Service Station	Yes	In progress	B
Ashby	Ashby Dry Dock	via Clarence Street	Other Industry	Yes	Completed	C G
Ashfield	Vehicle Workshop	445-449 Liverpool Road	Service Station	Yes	Completed	G
Asquith	BP Service Station	462 Pacific Highway	Service Station	Yes	Completed	G
Attunga	Attunga Limestone Mine (Waste Oil Site)	Garthowen Road	Other Industry	No	Completed	G
Auburn	RailCorp Auburn	1 Manchester Road	Other Industry	Yes	Completed	G
Auburn	DIC Australia	323 Chisholm Road	Other Industry	Yes	Completed	G
Auburn	Former Ajax chemical factory	9 Short Street	Other Industry	Yes	Completed	C
Auburn	Janyon	Manchester Road	Other Industry	Yes	Completed	G
Awaba	Awaba Colliery	Wilton Road	Other Industry	Yes	In progress	B
Balgowlah	Part of Manly Council Maintenance Depot	8-10 Roseberry Street	Other Petroleum	Yes	Completed	G
Balgowlah	BP Service Station	Cnr Sydney Road and Maretimo Street	Service Station	yes	In Progress	A
Ballina	Ballina Shell	273 River Street	Service Station	Yes	In progress	B
Ballina	Former Mobil Service Station	37-41 Cherry Street	Service Station	Yes	Completed	F G

Suburb/City	Site Description	Site Address	Activity that caused the contamination	s60 Form Received	EPA Initial Assessment	EPA Management Class
Ballina	Woolworths Petrol	44 Pacific Highway cnr Kerr Street	Service Station	yes	In Progress	A
Ballina	Ballina Mays Motors	River Street	Other Petroleum	No	Completed	F G
Balranald	Caltex Service Station	Sturt Highway	Service Station	Yes	In progress	B
Banksmeadow	Caltex Terminal	1-3 Penrhyn Road	Other Petroleum	Yes	Completed	D
Banksmeadow	Botany Orica Groundwater Project	16-20 Beauchamp Road	Chemical Industry	No	Completed	C D
Banksmeadow	Discovery Cove, Former Ampol Rail Terminal	1801 Botany Road	Other Petroleum	No	Completed	H
Banksmeadow	Pacific National Rail Siding	Beauchamp Road	Unclassified	Yes	In Progress	C
Banksmeadow	Orica Former Chlor Alkali Plant	Botany Industrial Park	Chemical Industry	No	Completed	C
Banksmeadow	Former Pipeline	Corish Circle	Other Petroleum	No	Completed	H
Bankstown	7 Eleven Service Station	689 Henry Lawson Drive	Service Station	Yes	Completed	G
Banora Point West	Caltex Service Station	2 Leisure Drive	Service Station	Yes	In progress	B
Barmedman	Caltex - Barmedman	Watson Street (Cnr Star St)	Service Station	Yes	In progress	B
Barrack Heights	Caltex Service Station	332-336 Shellharbour Rd	Service Station	Yes	In progress	B
Bateau Bay	Former landfill	The Entrance Road	Landfill	Yes	Completed	C
Batehaven	Caltex Service Station	264 Beach Road	Service Station	Yes	In progress	B
Batemans Bay	Caltex Service Station	87-89 Princes Hwy	Service Station	Yes	In progress	B
Bathurst	Former Mobil Depot	1 Lambert Street	Other Petroleum	Yes	In progress	A
Bathurst	Caltex Service Station	53 Durham St	Service Station	Yes	In progress	B
Bathurst	Former Shell Depot	56 Bant Street	Other Petroleum	Yes	In Progress	E
Bathurst	BP Service Station	56-60 Bathurst Road	Service Station	Yes	In progress	A
Bathurst	Shell Coles Express Service Station	59 Durham Street	Service Station	Yes	In Progress	B E
Bathurst	Former Gasworks	71 Russell St	Gasworks	Yes	Completed	C
Bathurst	Bathurst - Former Caltex Depot	Cnr Havannah St and Howick St	Other Petroleum	No	In Progress	A

Suburb/City	Site Description	Site Address	Activity that caused the contamination	s60 Form Received	EPA Initial Assessment	EPA Management Class
Bathurst	Former Police Station	Corner of William and Durham Streets	Other Petroleum	No	Completed	C G
Bathurst	Former Mobil Depot	Lower Russell Street	Other Petroleum	yes	Completed	G
Bathurst	Crago Mill site	Piper Street	Other Industry	Yes	Completed	G
Bathurst West	Shell Coles Express Service Station	298 Stewart Street (Cnr Stewart and Rocket Street)	Service Station	Yes	Completed	G
Baulkham Hills	Caltex Service Station	117 Seven Hills Rd	Service Station	Yes	In progress	B
Baulkham Hills	Caltex Service Station	130-132 Seven Hills Rd	Service Station	Yes	In Progress	A
Baulkham Hills	Shell Coles Express Service Station	363 Windsor Road	Service Station	Yes	Completed	E G
Beacon Hill	Caltex Service Station	176 Warringah Rd	Service Station	Yes	In progress	B
Bega	Former BP Service Station	100 - 102 Gipps Street	Service Station	Yes	In progress	A
Bega	Bega Gasworks	27 Upper Street	Gasworks	No	In Progress	B
Bega	Caltex Service Station	280 Carp Street	Service Station	Yes	In progress	B
Bega	Caltex Service Station	36-40 Lagoon St	Service Station	Yes	In progress	B
Belmont	Belmont Bus Depot	2 Floraville Road	Other Petroleum	yes	In Progress	B
Belmont	Former Ampol Service Station	467-469 Pacific Highway	Service Station	No	Completed	G
Belmont	Shell Coles Express Service Station	502 Pacific Highway	Service Station	Yes	In Progress	B
Belmont North	Woolworths Petrol	397 Pacific Highway	Service Station	Yes	In progress	A
Belmont North	Caltex Service Station	406 Pacific Hwy	Service Station	Yes	In progress	B
Belmore	SRA Land	348 Burwood Road	Unclassified	Yes	Completed	G
Belmore	7 Eleven Service Station	792-794 Canterbury Road	Service Station	Yes	Completed	G
Belrose	Caltex Service Station	157 Forest Way	Service Station	Yes	In progress	B
Belrose	Glenrose Shopping Centre	56-58 Glen Street	Unclassified	Yes	Completed	C
Belrose	Woolworths Petrol	60 Glen Street	Service Station	Yes	In progress	A
Beresfield	BP Beresfield Truckstop	Cnr Kinta and John Renshaw Drives	Service Station	Yes	In progress	A
Beresfield	Former Koppers Timber Treatment Site	53 Weakleys Drive	Other Industry	Yes	In progress	A

Suburb/City	Site Description	Site Address	Activity that caused the contamination	s60 Form Received	EPA Initial Assessment	EPA Management Class
Berkeley Vale	Former Berkeley Vale Service Station	121-123 Lakedge Avenue	Service Station	Yes	Completed	G
Berkshire Park	Shell Coles Express Berkshire Park	746 - 752 Rickmond Road	Service Station	Yes	In progress	A
Berowra	Caltex Service Station Berowra	12-14 Berowra Waters Rd	Service Station	Yes	In progress	A
Berowra	Shell Coles Express Berowra	955 Pacific Highway	Service Station	Yes	In progress	A
Berowra	7-Eleven Service Station	965-969 Pacific Highway	Service Station	Yes	In progress	B
Berrigan	Caltex Service Station	155-165 Chanter St	Service Station	Yes	In progress	B
Berry	Berry Service Centre	88 Queen Street	Service Station	Yes	Completed	E G
Bexley	7 Eleven Bexley	474 Forest Road	Service Station	Yes	In progress	A
Bexley	Mobil Service Station	613 Forest Road	Service Station	Yes	In progress	B
Bilambil Heights	Former banana plantation land	38 McAllisters Road	Unclassified	Yes	Completed	F
Billinudgel	CSR Readymix	Mogo Place	Other Industry	Yes	Completed	G
Blackmans Flat	Mount Piper Extension Development Site	2847 Boulder Road	Other Industry	Yes	Completed	G
Blackmans Flat	Lamberts Gully	Castlereagh Highway	Other Industry	Yes	In progress	A
Blacktown	Former Caltex Service Station	131 Richmond Rd	Service Station	No	Completed	G
Blacktown	7 Eleven Service Station	62 Walters Road	Service Station	Yes	In progress	B
Blacktown	Land at Reservoir Road	Reservoir Road	Unclassified	Yes	Completed	G
Blaxland	Mobil Service Station	137 Great Western Highway	Service Station	Yes	In progress	B
Boambee	Lindsay Bros transport depot site	542 Pacific Highway	Other Petroleum	No	Completed	G
Boambee East	Mobil Service Station	601 Pacific Highway	Service Station	Yes	In progress	A
Boggabilla	Caltex Service Station	Cnr Simpson St & Newell Hwy	Service Station	Yes	In progress	B
Boggabilla	Mobil Depot	Newell Highway	Other Petroleum	Yes	In Progress	E
Bomaderry	Bomaderry Works Depot	10 McIntyre Way	Other Petroleum	Yes	In progress	B
Bomaderry	Caltex Service Station	246 Princes Highway	Service Station	Yes	Completed	G

Suburb/City	Site Description	Site Address	Activity that caused the contamination	s60 Form Received	EPA Initial Assessment	EPA Management Class
Bomaderry	Caltex Service Station	341 Princes Hwy	Service Station	Yes	In progress	B
Bomaderry	Former Shell Depot	44 Railway Street	Other Petroleum	yes	Completed	G
Bomaderry	Mobil Depot	7 Victa Way	Other Petroleum	Yes	In Progress	E
Bomaderry	SRA Land	Lot 2 Meroo St	Unclassified	Yes	Completed	G
Bombala	Caltex Service Station	161 Maybe Street	Service Station	Yes	In progress	B
Bombala	Former Bright Street Timber Mill	Bright Street	Other Industry	No	Completed	G
Bombala	Caltex Service Station	High St Cnr Stephen St	Service Station	Yes	In progress	B
Bombala	Prime Pine site	Sandy Lane	Other Industry	No	Completed	G
Bomen	Caltex Terminal	18 Lewington Street	Other Petroleum	Yes	In progress	B
Bondi	BP Service Station	185 Bondi Road	Service Station	Yes	In progress	A
Bondi	Caltex Service Station	51 Bondi Rd	Service Station	Yes	In progress	B
Bonny Hills	Bonny Hills Service Station	923 Ocean Drive	Service Station	No	In Progress	B
Bonnyrigg	BP Service Station	Corner Cowpasture Road and North Liverpool Road	Service Station	Yes	In Progress	E
Bonnyrigg	Caltex Service Station	Smithfield Rd Cnr Elizabeth Dr	Service Station	Yes	In progress	B
Boolaroo	Cardiff West Estate - Pasmenco Cockle Creek	Adjacent to PCC Smelter at 13A Main Road	Metal Industry	No	Completed	G
Boolaroo	Cockle Creek and Cockle Bay Sediments	Cockle Creek	Metal Industry	No	Completed	C
Boolaroo	Pasminco Cockle Creek Smelter	Lake Road	Metal Industry	Yes	Completed	C
Boolaroo	Incitec Pivot	Main Street	Other Industry	Yes	Completed	C D
Boorowa	Mobil Depot	14-16 Brial Street	Other Petroleum	Yes	In progress	B
Boorowa	Mobil Service Station	63-69 Marsden Street	Service Station	No	Completed	C
Botany	Former Aerosols of Australia	1617 Botany Road	Chemical Industry	Yes	In Progress	B
Botany	Former Tannery	2 Daniel Street	Other Industry	Yes	Completed	G
Botany	Former Industrial Site	28 Folkestone Parade	Unclassified	Yes	Completed	F

Suburb/City	Site Description	Site Address	Activity that caused the contamination	s60 Form Received	EPA Initial Assessment	EPA Management Class
Botany	Nuplex Resins	49-61 Stephen Rd	Chemical Industry	Yes	Completed	C
Botany	RTA Depot	5 Lord Street	Other Petroleum	No	Completed	F
Botany	Caltex Terminal	Penrhyn Road	Other Petroleum	Yes	In progress	B
Botany	Mobil Terminal	Port Feeder Road	Other Petroleum	Yes	In Progress	E
Bourke	Caltex Service Station	82-86 Anson Street	Service Station	Yes	In progress	B
Bourke	Former Shell Depot	94- 106 Anson Street	Service Station	Yes	In Progress	A
Bowenfalls	Bowenfalls Field Service Centre	9-13 Coerwull Road	Other Petroleum	Yes	In progress	A
Bowral	Shell Coles Express Service Station	430 Bong Bong Street	Service Station	Yes	In Progress	B
Bowral	Former Gasworks	Merrigang Street	Gasworks	Yes	Completed	C
Branxton	Former Service Station	70 Maitland Street	Service Station	Yes	In Progress	B
Brighton Le Sands	Shell Service Station Brighton Le Sands & adjacent land	2 General Holmes Drive	Service Station	Yes	Completed	C G
Brighton Le Sands	Cook Park	General Holmes Drive	Service Station	No	Completed	C G
Broadmeadow	Nineways Broadmeadow Coles Express SS	Corner Brunker Road and Lambton Road	Service Station	Yes	In Progress	B
Broken Head	South Bynron Sewage Treatment Works	Broken Head Road	Other Industry	Yes	In progress	A
Broken Hill	Former Caltex Service Station	167-173 Argent Street	Service Station	No	Completed	G
Broken Hill	Caltex Service Station	3 Kanandah Road	Service Station	Yes	In progress	B
Broken Hill	Mobil Depot	5 Kanandah Road	Other Petroleum	Yes	In progress	A
Broken Hill	Caltex Service Station	535 Argent St	Service Station	Yes	In progress	B
Broken Hill	Caltex Service Station	73-87 Oxide St	Service Station	yes	Completed	C E
Broken Hill	Broken Hill Airport Mobil Refuelling Facility	Bonanza Street	Other Petroleum	Yes	In Progress	A

Suburb/City	Site Description	Site Address	Activity that caused the contamination	s60 Form Received	EPA Initial Assessment	EPA Management Class
Broken Hill	Mobil Depot	Corner Of Talc Street and Gossan Street	Other Petroleum	Yes	In Progress	E
Broken Hill	Former Gasworks	Cornish Street	Gasworks	Yes	Completed	C G
Brooklyn	Former Oyster Farm	Off Government Road	Unclassified	Yes	In progress	A
Brookvale	Little Drycleaning	123 Old Pittwater Road	Other Industry	Yes	In progress	B
Brookvale	Coles Express Brookvale	198 Harbord Road	Service Station	Yes	In progress	A
Brookvale	Brookvale Depot	630-636 Pittwater Road	Other Petroleum	Yes	In Progress	E
Brookvale	Caltex Service Station	740-742 Pittwater Rd	Service Station	Yes	In progress	B
Brookvale	Woolworths Petrol Brookvale	756 Pittwater Road	Service Station	Yes	In progress	B
Brookvale	AMP Warringah Mall	Cnr Condamine Street, Old Pittwater Rd & Cross St	Other Industry	Yes	In progress	B
Brownsville	Caltex Service Station	342 Kanahooka Rd	Service Station	Yes	In progress	B
Brunswick Heads	Caltex Service Station	5 Tweed St	Service Station	Yes	In progress	B
Bulahdelah	Mobil Service Station	59-63 Boolambayle Street	Service Station	Yes	In Progress	E
Bulahdelah	Caltex Service Station	Lot 5 Mahogany St	Service Station	Yes	In progress	B
Bulahdelah	Caltex Service Station	Pacific Hwy	Service Station	Yes	In progress	B
Bullaburra	Burmah Service Station	367 - 369 Great Western Highway	Service Station	Yes	In Progress	E
Bulli	Scrap Yard	7 Molloy Street	Other Industry	No	Completed	C
Bulli	Bulli Brickworks	Quilkey Place	Other Industry	Yes	In progress	A
Bungendore	Former Timber Treatment Plant	Corner King and Butmaroo Streets	Other Industry	No	Completed	C G
Buronga	Caltex Service Station	Sturt Hwy Cnr Silver City Hwy	Service Station	Yes	In progress	B
Burwood	Burwood STA Depot	Cnr Shafesbury and Parramatta Roads	Other Industry	Yes	Completed	C G
Byron Bay	Former South Byron Sewage Treatment Plant	Broken Head Road	Other Industry	Yes	In progress	A
Byron Bay	Residential Development	Lot 15 Seaview Street	Unclassified	Yes	Completed	F G
Cabarita	Cabarita Wellcome	33 Phillips Street	Landfill	No	Completed	C G
Cabarita	Dulux (Orica Australia)	Cabarita Road	Chemical Industry	No	Completed	C

Suburb/City	Site Description	Site Address	Activity that caused the contamination	s60 Form Received	EPA Initial Assessment	EPA Management Class
Cabramatta	Caltex Service Station	166 John St	Service Station	Yes	In progress	B
Calga	Former service station	101 Peats Ridge Road Calga	Service Station	No	Completed	C G
Callala Beach	Callala Beach General Store	114A Quay Rd (formerly 1 Quay Rd)	Service Station	Yes	Completed	G
Cambridge Park	Caltex Service Station	Lot 6 Star Court	Service Station	Yes	In progress	B
Camden	Caltex Service Station	21 Barsden St	Service Station	Yes	In progress	B
Camden	Camden High School (former)	John Street	Gasworks	No	Completed	G
Camden South	Shell Coles Express Service Station	273 Old Hume Highway	Service Station	Yes	In progress	A
Camellia	James Hardie Factory (former)	1 Grand Ave	Other Industry	Yes	Completed	C
Camellia	Council Reserve	11B Grand Ave	Metal Industry	No	Completed	G
Camellia	Bitumen Manufacturer	12 Grand Avenue	Other Industry	No	Completed	C D
Camellia	Wrigg	13 Grand Ave	Metal Industry	No	In Progress	A
Camellia	Hymix Concrete	14 Grand Ave	Metal Industry	No	Completed	C
Camellia	Hambear	14 Thackeray St	Metal Industry	No	Completed	G
Camellia	Mauri Foods, 15 grand avenue camellia	15 Grand Ave	Other Industry	Yes	Completed	H
Camellia	Railway Land	27 Grand Ave	Other Industry	No	Completed	G
Camellia	Maritime Services Board	33A Grand Ave	Metal Industry	No	Completed	G
Camellia	Veolia	37 Grand Avenue	Chemical Industry	No	Completed	C
Camellia	Asciano Properties	39 Grand Ave	Chemical Industry	No	Completed	C D
Camellia	Sydney Water	41 Grand Ave	Chemical Industry	No	Completed	C G
Camellia	Akzo	6 Grand Avenue	Chemical Industry	No	Completed	C
Camellia	Shell Clyde Refinery	Durham St	Other Petroleum	No	In Progress	A C
Cammeray	Coles Express Cammeray	477-483 Miller Street	Service Station	Yes	In progress	B
Cammeray	Tunks Park	Brothers Avenue	Landfill	Yes	Completed	C G

Suburb/City	Site Description	Site Address	Activity that caused the contamination	s60 Form Received	EPA Initial Assessment	EPA Management Class
Campbelltown	Former vehicle wrecking yard	38 Blaxland Road	Unclassified	Yes	In progress	B
Campbelltown	Mobil Service Station	96-98 Queen Street	Service Station	Yes	Completed	G
Campbelltown	BP Service Station	Cnr Blaxland Road and Campbelltown Road	Service Station	Yes	In Progress	E
Camperdown	O'Dea Reserve	Salisbury Lane	Landfill	Yes	Completed	C G
Campsie	Budget Petroleum and adjacent property	403 Canterbury Road and 1 Una Street	Service Station	Yes	Completed	C
Campsie	Former Sunbeam factory	60 Charlotte Street	Other Industry	Yes	Completed	C G
Canley Heights	Caltex Service Station	280-286 Canley Vale Rd	Service Station	Yes	In progress	B
Canley Heights	Caltex Service Station	368 Canley Valley Rd	Service Station	Yes	In progress	B
Canley Vale	Former Mobil Service Station	96 Canley Vale Road	Service Station	Yes	Completed	G
Canowindra	BP Service Station	76 Rodd Street	Service Station	Yes	In progress	A
Canterbury	Metro Petroleum Service Station	13-19 Canterbury Road	Service Station	No	Completed	C
Cardiff	Caltex Service Station	334-340 Main Rd	Service Station	Yes	In progress	B
Cardiff	Former Caltex Service Station	367 Main Road	Service Station	Yes	Completed	G
Cardiff	7-Eleven Service Station	399 Main Road	Service Station	Yes	Completed	G
Cardiff	Former Mobil Service Station	43 Macquarie Road	Service Station	Yes	In Progress	B F
Cardiff	Former Mobil Depot	7 Ranton Street	Other Petroleum	yes	Completed	F
Cardiff	BP Service Station	Corner Sturt and Main Roads	Service Station	yes	In Progress	A
Cardiff	Maneela Oval	Main Road	Other Industry	Yes	In progress	A
Caringbah	Adjacent to Spirent Australia	101-103 Cawarra Rd	Other Industry	No	Completed	C
Caringbah	Spirent Australia	105 Cawarra Road	Other Industry	No	Completed	C G
Caringbah	Former Consumer Health Products Manufacturer	32-40 Cawarra Road	Other Industry	Yes	Completed	G
Caringbah	7 Eleven Service Station	367 The Kingsway	Service Station	Yes	In progress	B
Carlingford	Caltex Service Station	131 Pennant Hills Rd	Service Station	Yes	In progress	B

Suburb/City	Site Description	Site Address	Activity that caused the contamination	s60 Form Received	EPA Initial Assessment	EPA Management Class
Carlingford	Caltex Service Station	797 Pennant Hills Rd	Service Station	Yes	In progress	B
Carlton	Shell Coles Express Service Station	274-281 Princes Highway	Service Station	Yes	Completed	D
Carrington	Carrington redevelopment site	11 Howden Street	Other Industry	No	Completed	G
Carrington	Cmc Australia Pty Ltd	117-121 Bourke Street	Other Industry	Yes	In progress	B
Carrington	Pasminco Ship Loader	Dyke Berth 2 (off Bourke Street)	Metal Industry	Yes	Completed	G
Carss Park	Vacant Property	334 Princes Highway	Other Industry	Yes	Completed	G
Carwell	Cement Australia - Carwell Creek Quarries	Quarry road	Other Industry	Yes	In progress	B
Casino	Former Gasworks	134-136 North Street	Gasworks	No	Completed	F
Casino	Caltex Service Station	32 Dyraaba St	Service Station	Yes	In progress	B
Casino	Caltex Service Station	96 Centre St	Service Station	Yes	In progress	B
Casino	Woolworths Petrol	Canterbury Street Cnr Summerland Way	Service Station	yes	In Progress	A
Casula	Caltex Service Station	646 Hume Hwy	Service Station	Yes	In progress	B
Catherine Hill Bay	Catherine Hill Bay Coal Handling and Preparation Plant	1A Keene Street	Other Industry	Yes	Completed	G
Cessnock	Former Mobil Service Station	102 Wollombi Road	Service Station	Yes	In Progress	B
Cessnock	Caltex Service Station	105 Wollombi Road	Service Station	Yes	In progress	B
Cessnock	Former Service Station	2-4 Allendale Road	Service Station	Yes	Completed	F
Charbon	Charbon Colliery	Charbon Road	Other Industry	Yes	In progress	A
Charlestown	Shell Service Station	273 Charlestown Road	Service Station	No	Completed	F G
Charlestown	Caltex Service Station	81 Pacific Hwy	Service Station	yes	Completed	H
Charlestown	BP Service Station	93 Pacific Highway	Service Station	Yes	Completed	C
Charlestown	Energy Australia Powell Street Depot	Powell Street	Other Industry	Yes	In progress	B
Charmhaven	Caltex Service Station	13-15 Pacific Hwy	Service Station	Yes	In progress	B
Chatswood	Auto Repairs	2 Devonshire Street	Service Station	yes	Completed	G
Chatswood	Caltex Service Station	572 Pacific Hwy	Service Station	Yes	In progress	B

Suburb/City	Site Description	Site Address	Activity that caused the contamination	s60 Form Received	EPA Initial Assessment	EPA Management Class
Chatswood	Former Caltex Service Station	607 Pacific Highway	Service Station	No	Completed	C
Chatswood	Coles Express Chatswood	877-879 Pacific Highway	Service Station	Yes	In progress	A
Chatswood West	Chatswood Toyota	728 Pacific Highway	Service Station	Yes	Completed	C G
Cherrybrook	Caltex Service Station	67 Shepherds Dr	Service Station	Yes	In progress	B
Chester Hill	Former Orica	127 Orchard Road	Chemical Industry	Yes	Completed	C
Chipping Norton	Mobil Depot	49-51 Riverside Road	Other Petroleum	No	Completed	H
Chipping Norton	Former ACR	85-107 Alfred Street	Chemical Industry	Yes	Completed	C
Chiswick	Former Sydney Wiremills (BHP) site	Blackwall Point Road	Other Industry	Yes	Completed	F
Chittaway Point	Caltex Service Station	100 Chittaway Rd	Service Station	Yes	In progress	B
Chullora	Chullora Railway Workshops	Worth Street	Other Industry	yes	In Progress	A
Clarence	Clarence Colliery	Chifley Road	Other Industry	Yes	In progress	A
Clarendon	Coles Express Clarendon	244 Richmond Road	Service Station	Yes	In progress	A
Clearfield	Former Pampings Dip Site	Off Clearfield Road	Cattle Dip	yes	Completed	G
Clybucca	BP Service Station	1 Pacific Highway	Service Station	Yes	In Progress	E
Clyde	Mobil Service Station	3 Parramatta Road	Service Station	Yes	In progress	A
Cobar	Caltex- Cobar	56-58 Marshall Street	Service Station	Yes	In progress	B
Cobar	Caltex Cobar Service Station	Barrier Hwy	Service Station	Yes	In progress	B
Cobar	Mckinnons Gold Mine	Cobar	Metal Industry	Yes	In progress	B
Cobar	Caltex Service Station	Lot 10 Railway Parade	Service Station	Yes	In progress	B
Coffs Harbour	Dan Murphy's Coffs Harbour	10 Elbow Street	Service Station	Yes	In progress	A
Coffs Harbour	BP Service Station	134 Pacific Highway	Service Station	No	Completed	C
Coffs Harbour	Caltex Service Station	157 Orlando St	Service Station	Yes	In progress	B
Coffs Harbour	Aussitel Backpackers Hostel	312 Harbour Drive	Service Station	Yes	Completed	C G
Coffs Harbour	Mobil Service Station	314-316 Harbour Drive	Service Station	Yes	Completed	C
Coffs Harbour	Coffs Harbour Slipway	38 Marina Drive	Other Industry	Yes	In progress	B

Suburb/City	Site Description	Site Address	Activity that caused the contamination	s60 Form Received	EPA Initial Assessment	EPA Management Class
Coffs Harbour	Coffs Harbour Airport Mobil	Beatties Fuel Depot	Other Petroleum	No	Completed	C G
Coffs Harbour	Caltex Service Station	Cnr Pacific Hwy & Halls Rd	Service Station	Yes	In progress	B
Coffs Harbour	Woolworths Petrol	Park Beach Plaza, Pacific Highway	Service Station	Yes	In Progress	E
Coleambally	Mobil Depot	19 Bencubbin Avenue	Other Petroleum	Yes	In progress	A
Collarenebri	Former Shell Depot	Corner Narran Street and Queen Street	Other Petroleum	yes	Completed	G
Colongra	Endeavour Colliery	Scenic Drive	Other Industry	Yes	In progress	A
Colongra	Munmorah Colliery	Scenic Drive	Other Industry	Yes	In progress	A
Colyton	Ampol Service Station	88 Great Western Highway	Service Station	Yes	Completed	C
Concord	Caltex Service Station	87-89 Parramatta Rd	Service Station	Yes	In progress	B
Concord	Caltex Service Station	92a Concord Rd	Service Station	Yes	In progress	B
Concord West	Caltex Service Station	369-375 Concord Rd	Service Station	Yes	In progress	B
Condobolin	BP Service Station	36 Dennison Street	Service Station	Yes	In progress	A
Condobolin	Former Mobil Depot	6 Burnett Street	Other Petroleum	Yes	Completed	C
Condobolin	Mobil Condobolin Depot Railway Siding	6 Burnett Street	Other Petroleum	Yes	In progress	A
Condobolin	Former Ampol Depot	Cnr Parkes Road and Goobang Street	Service Station	No	Completed	G
Condobolin	Caltex Service Station	Parkes Rd	Service Station	Yes	In progress	B
Coogee	Caltex Service Station	146-148 Coogee Bay Road	Service Station	Yes	In progress	B
Coogee South	Caltex Service Station	169-173 Malabar Rd	Service Station	Yes	In progress	B
Cooks Hill	Former Council depot.	152 Cooks Street & 115 Corlette Street	Other Industry	Yes	In Progress	A
Coolac	Coolac Service Station	Corner Hume Highway and Coleman Street	Service Station	Yes	Completed	F
Coolah	BP Depot (Reliance Petroleum)	17-23 Cunningham Road	Other Petroleum	Yes	In progress	A
Coolonglook	Caltex Service Station	Pacific Hwy	Service Station	Yes	In progress	B
Cooma	Mobil Depot	2 Commissioner Street	Other Petroleum	Yes	In progress	B

Suburb/City	Site Description	Site Address	Activity that caused the contamination	s60 Form Received	EPA Initial Assessment	EPA Management Class
Cooma	Caltex Service Station	2 Short Street	Service Station	Yes	In progress	B
Cooma	BP Depot (Reliance Petroleum)	4 Sharp Street	Other Petroleum	Yes	In progress	A
Cooma	BP Service Station (Reliance Petroleum)	4 Sharp Street	Service Station	Yes	In progress	A
Cooma	Caltex Service Station	44 Sharp St	Service Station	Yes	In progress	B
Cooma	Former Shell Depot	48-50 Bradley Street	Other Petroleum	Yes	In Progress	E
Cooma	Shell Service Station	54 Sharp St	Service Station	No	Completed	G
Cooma	Woolworths Petrol	Bombala Street Cnr Massie Street	Service Station	yes	In Progress	A
Coonabarabran	Shell Coles Express Service Station	2-6 John Street	Service Station	Yes	In Progress	B
Coonabarabran	Former Mobil Depot	49 Cowper Street	Other Petroleum	Yes	In Progress	A
Coonabarabran	Shell Former Coonabarabran CVRO	51 Cowper Street	Other Petroleum	yes	Completed	G
Coonabarabran	Caltex Service Station	85-87 John Street	Service Station	Yes	In progress	B
Coonabarabran	Caltex Service Station	Cnr Dawson & Drummond Street	Service Station	Yes	In progress	B
Coonamble	Former Shell Depot	Corner Aberford Street and Quambone Road	Other Petroleum	Yes	In progress	A
Coonamble	Caltex Service Station	Quambone Street	Service Station	Yes	In progress	B
Cooranbong	Poultry Farm	Alton Road and Freemans Drive	Unclassified	Yes	In Progress	B
Cootamundra	Cootamundra Gasworks	140-146 Hovell Street	Gasworks	Yes	Completed	C
Cootamundra	Former BP Depot	1-5 Murray Street	Other Petroleum	Yes	In Progress	B
Cootamundra	Caltex Service Station	219 Sutton Way (olympic Way)	Service Station	Yes	In progress	B
Cootamundra	Caltex Service Station	26-34 Hovell St	Service Station	Yes	In progress	B
Cootamundra	Former Amoco Depot	68-72 Hovell Street	Other Petroleum	Yes	Completed	C
Cootamundra	Caltex Service Station	72 Parker St	Service Station	Yes	In progress	B
Coramba	Martin Street	End of Martin Street and adjacent car park	Service Station	Yes	Completed	C

Suburb/City	Site Description	Site Address	Activity that caused the contamination	s60 Form Received	EPA Initial Assessment	EPA Management Class
Corowa	Former Caltex Service Station	10 Bow St	Service Station	Yes	In progress	A
Corowa	Corowa Shire Council Works Depot	12 - 18 Poseidon Road	Other Petroleum	Yes	In progress	A
Corrimal	7 Eleven Corrimal	138-146 Princes Highway	Service Station	Yes	In progress	A
Cowra	Cowra Depot (Reliance Petroleum)	10 Campbell Street	Other Petroleum	Yes	In progress	A
Cowra	Former Gasworks	30 Brougham Street	Gasworks	no	Completed	C
Cowra	Shell Depot	34 Brougham Street	Other Petroleum	No	Completed	C
Cowra	Landmark Fertiliser Storage	Corner Young Road & Waratah Street	Chemical Industry	Yes	In progress	A
Crangan Bay	Big T Road House.	555 and 565 Pacific Highway	Service Station	No	Completed	C
Cremorne	Shell Coles Express Service Station	225 Military Road	Service Station	Yes	In Progress	E
Cringila	Cringila Public School	Sheffield Street	Landfill	Yes	Completed	G
Cronulla	Breen Holdings	Bate Bay Road	Other Industry	Yes	Completed	G
Crows Nest	Caltex Service Station	111-121 Falcon Street	Service Station	Yes	In progress	B
Croydon	Caltex Service Station	404-410 Liverpool Rd	Service Station	Yes	In progress	B
Croydon Park	Mobil Service Station	334 Georges River Road	Service Station	Yes	Completed	G
Culcairn	Caltex Service Station	Olympic Way	Service Station	Yes	In progress	B
Cullen Bullen	Baal Bone Colliery	Castlereagh Highway	Other Industry	Yes	In progress	A
Cundletown	Caltex Service Station	Old Pacific Highway	Service Station	Yes	In progress	B
Curl Curl and North Curl Curl	John Fisher Park	Corner Harbord and Abbot Roads	Landfill	Yes	In progress	A
Daceyville	Astrolabe Park	Cook Avenue	Landfill	Yes	Completed	H
Dapto		12-14 Hamilton Street	Other Industry	Yes	Completed	G
Dapto	RailCorp Dapto	Rear of 2-14 Hamilton Street	Other Industry	Yes	Completed	G
Darlinghurst	Cross City Tunnel	Riley and William Streets	Service Station	No	Completed	F
Dee Why	Caltex Service Station	793-797 Pittwater Rd	Service Station	Yes	In progress	B
Dee Why	Dee Why Town Centre	Pittwater Road	Other Industry	Yes	In progress	A
Deniliquin	Caltex Service Station	116-118 Harding Rd	Service Station	Yes	In progress	B

Suburb/City	Site Description	Site Address	Activity that caused the contamination	s60 Form Received	EPA Initial Assessment	EPA Management Class
Deniliquin	Former Shell Depot	143-147 Napier Street	Other Petroleum	Yes	In Progress	E
Deniliquin	Shell Coles Express Service Station	336 Victoria Street	Service Station	Yes	Completed	C
Deniliquin	Deniliquin Gasworks	365 and 369 George St and 380 Charlotte Street	Gasworks	No	In Progress	A
Deniliquin	Landmark Chemicals Storage	90-101 Davidson Street	Chemical Industry	Yes	In progress	A
Deniliquin	BP Depot	Corner Harding and Sloane Streets	Service Station	Yes	In progress	A
Denman	Former Industrial Site	10 Fontana Way	Metal Industry	Yes	Completed	G
Denman	Former Industrial Site	9 Fontana Way	Metal Industry	Yes	Completed	G
Doyalson	Transgrid	David St	Other Industry	No	Completed	G
Doyalson	Manning Colliery (formerly Wye)	Rutleys Road	Other Industry	Yes	In progress	A
Doyalson	Munmorah Power Station	Scenic Drive (Central Coast Highway)	Unclassified	Yes	In Progress	A D
Doyalson North	Shell Coles Express Service Station	260-270 Pacific Highway	Service Station	No	In Progress	B
Drummoyne	Caltex Service Station	191-195 Lyons Rd	Service Station	Yes	In progress	B
Drummoyne	Former Dry Cleaners	225 Victoria Road	Chemical Industry	yes	In Progress	B
Drummoyne	Coles Express Drummoyne	35-51 Victoria Road	Service Station	Yes	In progress	A
Dubbo	BP Service Station, Dubbo	105 Erskine Street	Service Station	Yes	In Progress	B
Dubbo	Mobil Depot	107 Erskine Street	Other Petroleum	Yes	In Progress	E
Dubbo	Former Shell Depot	109-111 Erskine Street	Other Petroleum	Yes	In Progress	E
Dubbo	Caltex Service Station	119 Bourke St	Service Station	Yes	In progress	B
Dubbo	Shell Coles Express Service Station	131-133 Cobra Street	Service Station	Yes	In Progress	A
Dubbo	Dubbo Police Station	153 Brisbane Street	Other Petroleum	Yes	In Progress	A
Dubbo	Former Ambulance Station	165 Brisbane Street	Other Petroleum	Yes	Completed	C G

Suburb/City	Site Description	Site Address	Activity that caused the contamination	s60 Form Received	EPA Initial Assessment	EPA Management Class
Dubbo	Service Station at Harvey Norman Centre	219-233 Cobra Street	Service Station	Yes	In progress	B
Dubbo	Former Mobil depot	40-44 Morgan Street	Other Petroleum	Yes	Completed	G
Dubbo	Shell Coles Express Service Station	45-49 Whylandra Street	Service Station	Yes	In Progress	E
Dubbo	Caltex Service Station, Dubbo	60 Windsor Parade	Service Station	Yes	Completed	E G
Dubbo	Caltex Service Station, Dubbo	Cnr Brisbane Street and Cobra Street	Service Station	Yes	Completed	C
Dubbo	Caltex Service Station	Phillip St Cnr Fitzroy St	Service Station	Yes	In progress	B
Dubbo North	Caltex Service Station	Bourke Street	Service Station	Yes	In progress	B
Dubbo West	Mobil Service Station	Corner Whylandra and Victoria Streets	Service Station	Yes	In progress	A
Dulwich Hill	Former Tyre Recapping	115-117 Constitution Road	Other Industry	No	Completed	G
Dulwich Hill	Denison Road Playground	194 Denison Road	Landfill	yes	Completed	F
Dunedoo	Former Shell Depot	Corner Bolaro Street and Redbank Street	Other Petroleum	Yes	In progress	A
Dungog	Lot 54 Common Rd	54 Common Road	Unclassified	No	Completed	G
Dunmore	Equestrian Centre	71 Fig Hill Lane	Unclassified	Yes	Completed	G
Dural	Caltex Service Station	530 Old Northern Road	Service Station	No	Completed	G
Dural	Woolworths Caltex Service Station	532 Old Northern Road	Service Station	Yes	In progress	A
Dural	BP Service Station	582 Old Northern Road	Service Station	Yes	In progress	B
Dural	Caltex Service Station	917-923 Old Northern Rd	Service Station	Yes	In progress	B
Eagle Vale	BP Service Station	Corner Eagle Vale Drive and Gould Road	Service Station	Yes	In Progress	E
Earlwood	RTA Land	2 Jackson Place	Unclassified	Yes	In progress	A
Earlwood	RTA Land	3 Jackson Place	Unclassified	yes	Completed	C
East Ballina	Caltex Service Station	34 Links Ave	Service Station	Yes	In progress	B
East Gosford	Mobil Service Station	44 Victoria Street	Service Station	Yes	Completed	C
East Gosford	Presbyterian Aged Care Facility	8-18 Enid Crescent	Landfill	Yes	Completed	G

Suburb/City	Site Description	Site Address	Activity that caused the contamination	s60 Form Received	EPA Initial Assessment	EPA Management Class
East Maitland	Mobil Service Station	250 Newcastle Street	Service Station	Yes	In Progress	E
East Maitland	Former Gasworks Site	Corner Melbourne and Brisbane St	Gasworks	No	Completed	G
East Maitland	Caltex Service Station	Newcastle Rd Cnr William St	Service Station	Yes	In progress	B
East Tamworth	Caltex Service Station	358 New England Hwy	Service Station	Yes	In progress	B
Eastern Creek	Caltex Service Station	M4 Motorway Eastbound	Service Station	Yes	In progress	B
Eastern Creek	Caltex Service Station M4 Motorway Westbound	M4 Westbound	Service Station	yes	Completed	E G
Eastern Creek	Pioneer Road Services	Old Walgrove Road	Other Industry	Yes	In progress	B
Eastlakes	Mobil Service Station	102 Maloney Street	Service Station	Yes	Completed	C
Eastlakes	Former Shell Rosebery service station and adjacent land	275-279 Gardeners Road	Service Station	Yes	Completed	C G
Eastlakes	Eastlakes Reserve	Evans Avenue	Service Station	Yes	Completed	C G
Eastwood	Mobil Service Station	5 Trelawney Street	Service Station	Yes	In progress	B
Eden	Caltex Service Station	159 Imlay St	Service Station	Yes	In progress	B
Eden	Caltex Service Station	80-86 Imlay St	Service Station	Yes	In progress	B
Edensor Park	Mobil Service Station	Corner Cowpasture Road and Elizabeth Drive	Service Station	Yes	In progress	B
Edgecliff	Shell Coles Express Service Station	67 New South Head Road	Service Station	Yes	In Progress	E
Edgeworth	Caltex Service Station	662 Main Rd	Service Station	Yes	In progress	B
Emerton	7-Eleven Service Station	135-137 Popondetta Road	Service Station	Yes	Completed	G
Emu Heights	7-Eleven Service Station	126 Old Bathurst Road	Service Station	Yes	Completed	G
Emu Heights	Woolworths Caltex Service Station	132 Old Bathurst Road	Service Station	Yes	In progress	A
Emu Plains	Woolworths Caltex Service Station	283 Great Western Highway	Service Station	Yes	In progress	A
Engadine	BP Service Station	1234 Princes Highway	Service Station	Yes	Completed	C
Engadine	BP Branded Service Station	963 Old Princes Highway	Service Station	No	Completed	C F
Engadine	Former Caltex Service Station	995 Old Princes Highway	Service Station	No	In Progress	B
Epping	Mobil Service Station	246 Beecroft Road	Service Station	Yes	In progress	A

Suburb/City	Site Description	Site Address	Activity that caused the contamination	s60 Form Received	EPA Initial Assessment	EPA Management Class
Erina	Former Frozen Food Distribution Depot	1 Aston Road	Other Petroleum	Yes	Completed	C
Erina	Caltex Service Station	155 The Entrance Rd	Service Station	Yes	In progress	B
Erina	Coles Express Erina	211 The Entrance Road	Service Station	Yes	In progress	A
Erina	7 Eleven Service Station	214 The Entrance Road	Service Station	Yes	In progress	B
Erina	7-Eleven Service Station	96 The Entrance Road	Service Station	Yes	In progress	B
Ermington	Caltex Service Station	560-562 Victoria Rd	Service Station	Yes	In progress	B
Erskineville	Redevelopment Site	36/1A Coulson Street	Unclassified	Yes	Completed	G
Erskineville	Department of Housing	52 John St	Other Industry	No	Completed	G
Erskineville	RailCorp land	Coulson Street	Other Industry	yes	In Progress	B
Euabalong West	Euabalong West Depot (Reliance Petroleum)	Corner Illawong Street and Murrin Street	Other Petroleum	Yes	In progress	A
Evans Head	Evans Head Residential subdivision	Bounded by Currajong, Woodburn, Carrabeen Streets and Tuckerroo Cres	Unclassified	No	Completed	G
Evans Head	Bundjalung National Park	Gap Road	Unclassified	Yes	In Progress	B
Evans Head	Evans Head Aerodrome	Memorial Airport Drive	Other Industry	No	Completed	G
Eveleigh	Macdonaldtown Triangle	Burren Street	Gasworks	Yes	Completed	C F
Eveleigh	Australian Technology Park	Henderson Road	Other Industry	yes	Completed	G
Fairfield	Integral Energy Fairfield Zone Substation	22 Hedges Street	Other Industry	yes	In Progress	A
Fairfield	Speedway Petroleum	251 The Horsley Drive	Service Station	Yes	Completed	D G
Fairfield West	7 Eleven Fairfield West	234 Hamilton Road Cnr The Boulevard	Service Station	Yes	In progress	A
Fairy Meadow	Caltex Fuel Depot	46 Montague Street and adjoining land	Service Station	No	Completed	C G
Fairy Meadow	Deynal (Seeman)	51-59 Princes Highway	Service Station	No	Completed	F G
Farley	Farley Waste Water Treatment Works	Owl Pen Lane	Unclassified	Yes	In progress	B
Fassifern	Newstan Colliery	Fassifern Road	Other Industry	Yes	In progress	A
Federal	Federal General Store	3-6 Federal Drive	Service Station	Yes	Completed	C
Fern Bay	Former service station	37 Nelson Bay Road	Service Station	No	Completed	F
Five Dock	7 Eleven Service Station	231-235 Great Northern Road	Service Station	Yes	In progress	B

Suburb/City	Site Description	Site Address	Activity that caused the contamination	s60 Form Received	EPA Initial Assessment	EPA Management Class
Five Dock	Caltex Service Station	Fairlight St Cnr Ramsay Rd	Service Station	Yes	In progress	B
Forbes	Depot Forbes (Reliance Petroleum)	13 Union Street	Other Petroleum	Yes	In progress	A
Forbes	Former Gasworks	24-26 Union Street	Gasworks	No	In Progress	B C
Forbes	Crippen Park	34 Dowling Street	Service Station	Yes	In progress	B
Forbes	BP Service Station	Corner Johnson and Dowling Streets	Other Petroleum	Yes	In progress	A
Forbes	Former Shell Depot	Corner Stephen Street and Little Union Street	Other Petroleum	Yes	In Progress	E
Forbes	Former Save on Fuel Service Station	Dowling Street	Service Station	Yes	In Progress	A
Forbes	Caltex Service Station	Parkes Rd	Service Station	Yes	In progress	B
Foresters Beach	Caltex Service Station	The Entrance Rd Cnr Bellevue Rd	Service Station	Yes	In progress	B
Forestville	BP Service Station	632 Warringah Road	Service Station	yes	Completed	C E
Forestville	Shell Service Station	667 Warringah Road	Service Station	Yes	Completed	C
Forster	Caltex Service Station	16-18 Lake St	Service Station	Yes	In progress	B
Forster	Shell (Kneebone's) Service Station	2-6 The Lakes Way	Service Station	Yes	In Progress	B
Forster	Former Mobil Service Station	86-88 Macintosh Street	Service Station	Yes	In progress	B
Frenchs Forest	Former Mobil Service Station (Beacon Hill)	312 Warringah Road	Service Station	Yes	In progress	B
Frenchs Forest	Former BP Service Station	Russell Avenue	Service Station	yes	Completed	H
Freshwater	Mobil Prime Service Station	119 Harbord Road	Service Station	Yes	In Progress	A
Georgetown	Caltex Service Station	Cnr Christo & Georgetown Rd	Service Station	Yes	Completed	F
Gerringong	Gerringong Cooperative	18 Belinda Street	Other Petroleum	Yes	Completed	G
Gilgandra	Mobil Service Station	15 Castlereagh Street	Service Station	Yes	In progress	A
Gilgandra	Mobil Depot	2 Federation Street	Other Petroleum	Yes	In progress	A
Gilgandra	Mobil Depot	20 Federation Street	Other Petroleum	Yes	In Progress	E
Gilgandra	Caltex Service Station	6425 Newell Hwy	Service Station	Yes	In progress	B

Suburb/City	Site Description	Site Address	Activity that caused the contamination	s60 Form Received	EPA Initial Assessment	EPA Management Class
Girraween	Industrial Galvanizers site	20-22 Amax Avenue	Metal Industry	Yes	Completed	D
Gladesville	Caltex Service Station	116 Victoria Rd	Service Station	Yes	In progress	B
Gladesville	Caltex Service Station	287-295 Victoria Rd	Service Station	Yes	In progress	B
Gladesville	Road Reserve	Pittwater Road	Other Industry	Yes	In progress	A
Glebe	The Hill and Jubilee Embankment	12 Maxwell Road	Other Industry	yes	Completed	F G
Glen Innes	Ambulance Station	106 Bourke Street	Unclassified	Yes	Completed	G
Glen Innes	Caltex Service Station	130 Lambeth St	Service Station	Yes	In progress	B
Glen Innes	Caltex Service Station	154 New England Hwy	Service Station	Yes	In progress	B
Glen Innes	Caltex Service Station	Church St Cnr Meade St	Service Station	Yes	In progress	B
Glen Innes	Caltex Service Station	Cnr Taylor & Church Sts	Service Station	Yes	In progress	B
Glen Innes	Former Caltex Depot,	Lambeth Street	Other Petroleum	No	Completed	G
Glen Innes	Former Shell Depot	Lot 1, Lambert Street	Other Petroleum	Yes	In Progress	E
Glen Innes	Council-owned Laneway	Lot 2 Lang Street	Gasworks	No	Completed	F G
Glen Innes (see Figure 1)	Telstra Depot, Lambeth Street Glen Innes	126 Lambeth Street	Unclassified	Yes	Completed	G
Glenbrook	Caltex Service Station	78 Great Western Hwy	Service Station	Yes	In progress	B
Glendale	Former Service Station	334-342 Lake Road	Unclassified	yes	Completed	G
Glendale	Shell Service Station	593 Main Road	Service Station	Yes	In progress	A
Glendale	Woolworths Service Station	Stockland Drive	Service Station	Yes	In progress	A
Glendenning	Mobil Service Station	1 Dublin Street	Service Station	Yes	In progress	A
Glenorie	Glenorie Caltex Service Station	912 Old Northern Road	Service Station	Yes	In Progress	A
Gloucester	Caltex Service Station	141 Church Street	Service Station	Yes	In progress	B
Goonellabah	Invercauld Road Cattle Dip	161 Invercauld Road	Cattle Dip	No	In Progress	A C
Gosford	Mobil Depot	Corner Merinee Road and Bowen Crescent	Other Petroleum	Yes	In progress	B
Gosford West	Caltex Service Station	283 Manns Rd	Service Station	Yes	In progress	B
Gosford West	Caltex Service Station	30a Pacific Hwy	Service Station	yes	In Progress	B
Goulburn	Former Goulburn Gasworks	1 Blackshaw Road	Gasworks	yes	Completed	C